



Nomad Art in conjunction with Injalak Arts and the Nadjamerrek Family present

# **MANME MAYH: GARDENS OF THE STONE COUNTRY**

August 2012

An exhibition featuring a unique style of painting, which draws upon rock art traditions of western Arnhem Land and highlights cultural associations to bush foods (manme) and plants (mayh).

Kalarriya (Jimmy) Namarnyilk (dec)

Nakadilinj (Don) Namundja

Allan Nadjamerrek

Maralngurra (Maath) Nadjamerrek

Namarnyilk (Gavin) Nadjamerrek

Ray Nadjamerrek

## Kalarriya (Jimmy) Namarnyilk (dec)



Ngalkordow (Brolga) #8782-11 , acrylic and ochre on paper 41 x 62 cm, mounted \$660



## Kalarriya (Jimmy) Namarnyilk (dec)



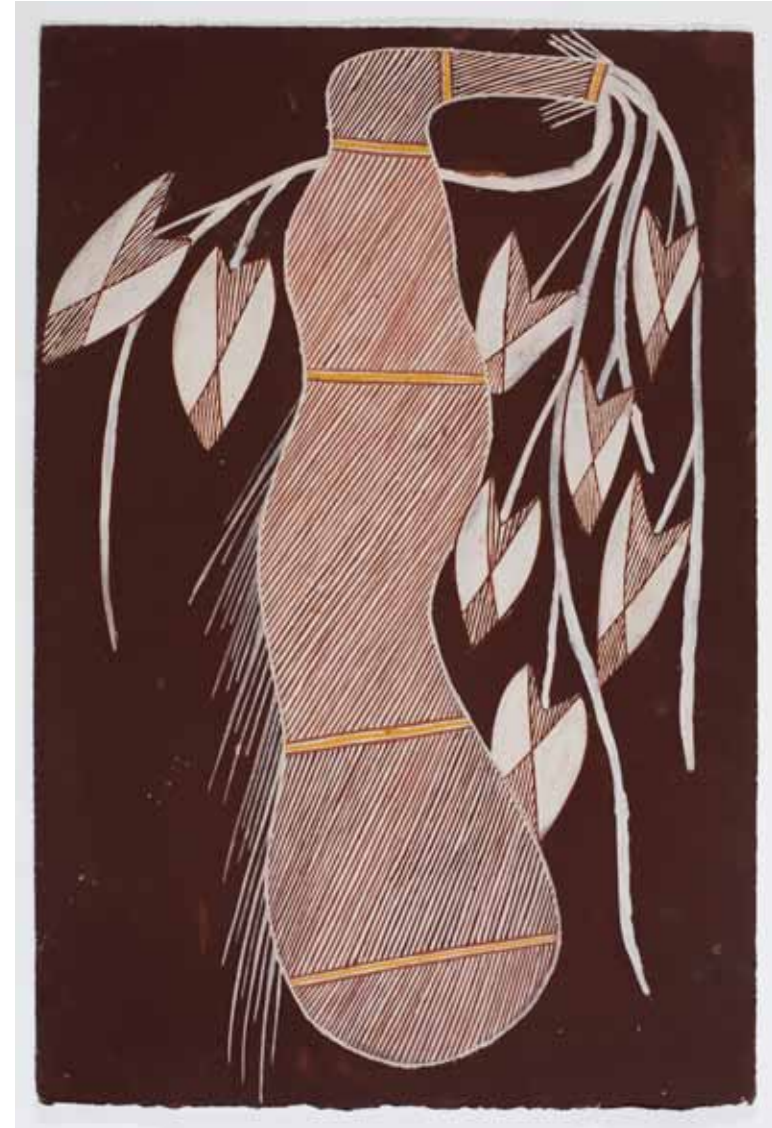
Ngarrbek (Echidna) #7832-11, acrylic and ochre on paper, 76 x 51cm, mounted \$840



## Kalarriya (Jimmy) Namarnyilk (dec)



Ngalmangiyi (Long-necked Turtle) #9198-11 ochre on paper, 41 x 62cm, mounted \$660



Karrbarda (Long Yam) #5778-08, acrylic and ochre on paper, 61 x 41cm, mounted \$660



## Kalarriya (Jimmy) Namarnyilk (dec)



Mimi Spirit eating manyo #9432-11 acrylic and ochre on paper, 62 x 41 cm \$620



Nadjnem (Black Wallaby) #9139-11, acrylic and ochre on paper, 62 x 41 cm, mounted \$660



## Kalarriya (Jimmy) Namarnyilk (dec)



Narbalek - rock wallaby #1049-10, acrylic and ochre on paper, 62 x 41 cm, mounted \$660



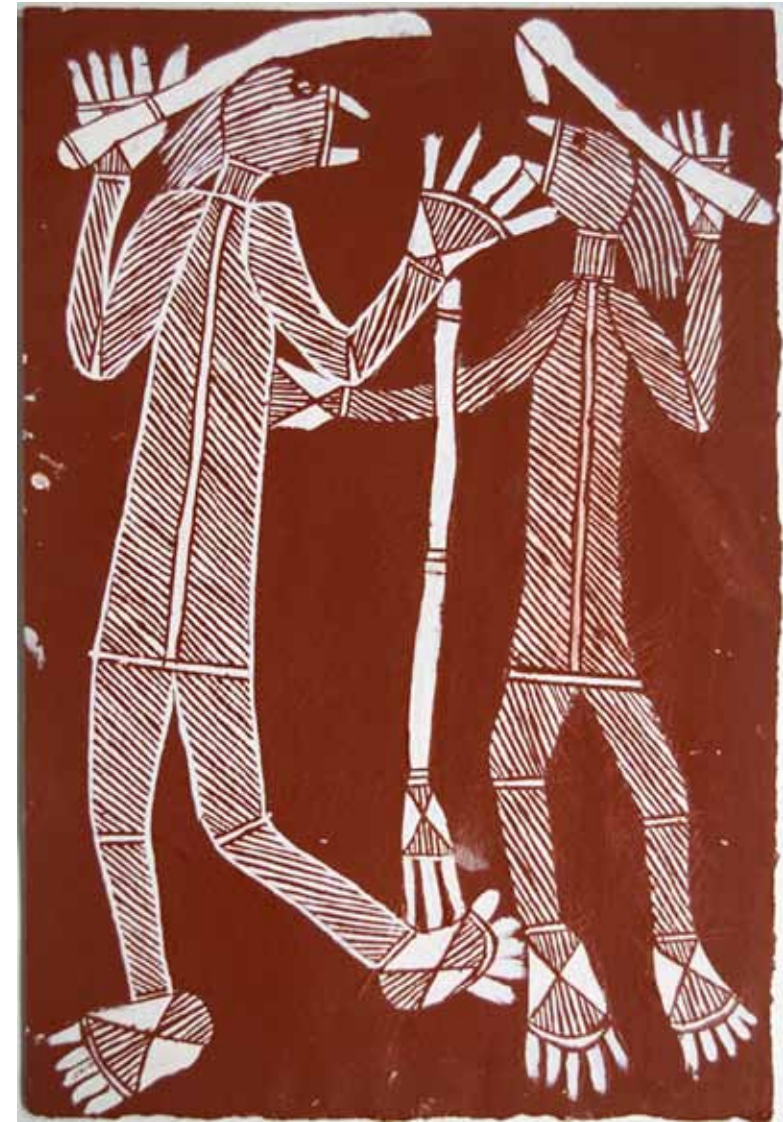
Fighting men #10669-11 acrylic and ochre on paper, 62 x 41 cm \$620



## Kalarriya (Jimmy) Namarnyilk (dec)



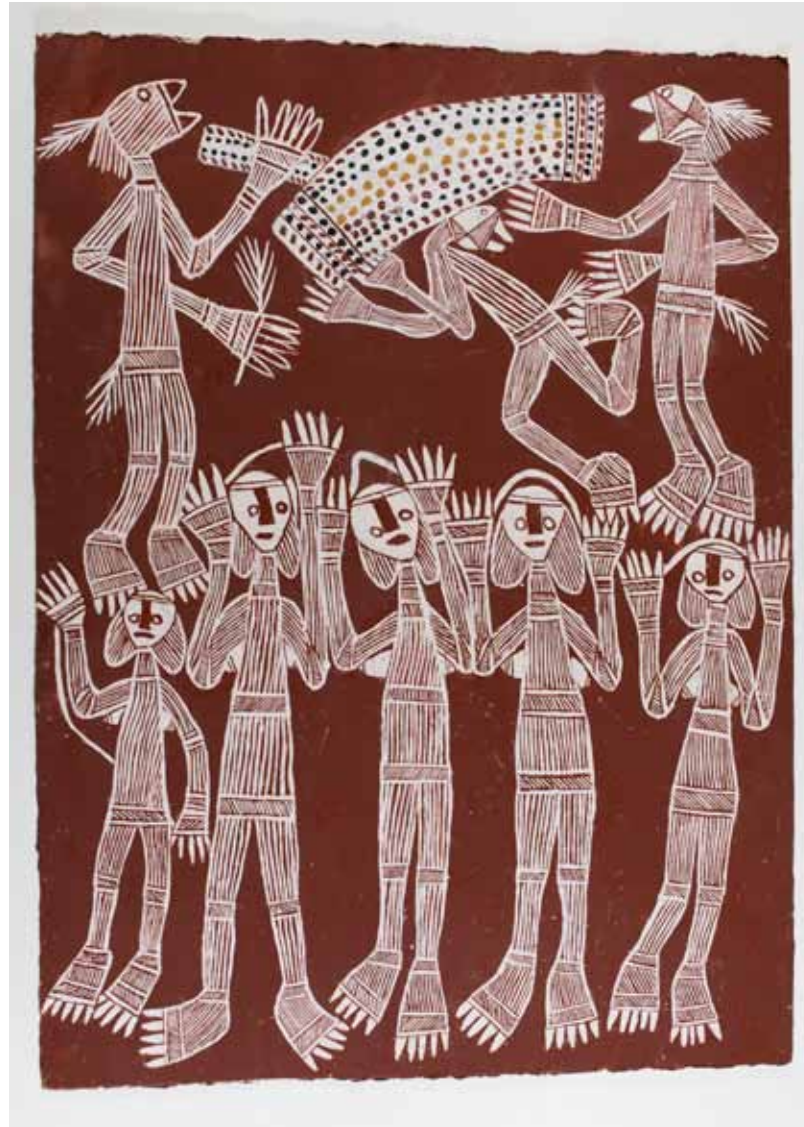
Ngalkodjok #7912-11 acrylic and ochre on paper, 76 x 51 cm \$790



Fighting men #10937-11 acrylic and ochre on paper, 76 x 51 cm \$790



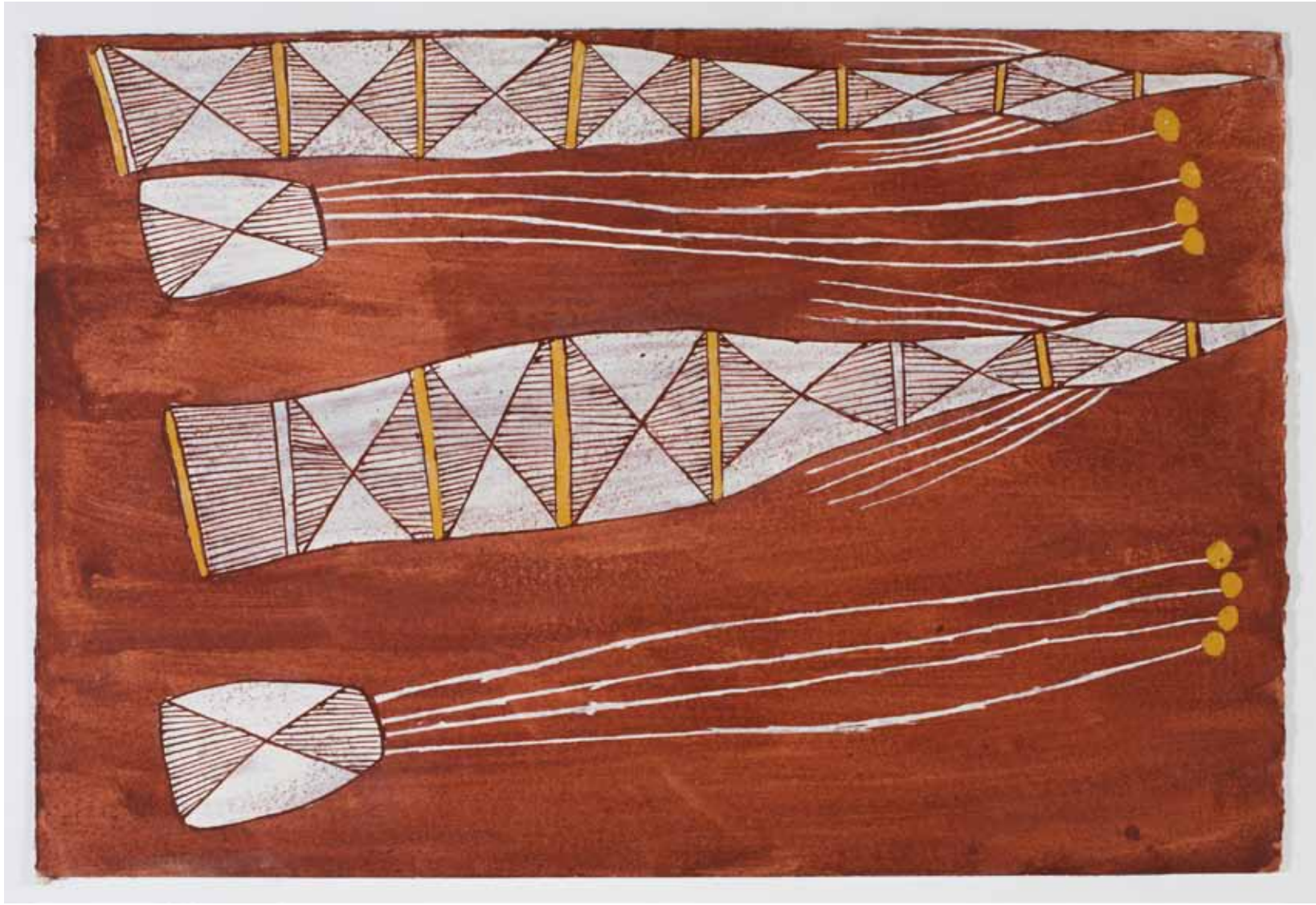
# Kalarriya (Jimmy) Namarnyilk (dec)



Ubarr Ceremony #5726-10, acrylic and ochre on paper, 1003 x 76 cm, mounted \$1800



# Nakadilinj (Don) Namundja



Bush Foods, Yam, Dilly Bag, #818-09, acrylic and ochre on paper, 41 x 61cm, mounted \$660



# Nakadilinj (Don) Namundja



Dikkala (Bush Tucker) for Mimi Spirits, #2316-09, acrylic and ochre on paper 61 x 41cm, **mounted \$660**



Palm Trees #2586-09, acrylic and ochre on paper 61 x 41cm, **mounted \$660**



# Nakadilinj (Don) Namundja



Bush Onion #1134-08, acrylic and ochre on paper, 30 x 62 cm, **mounted** \$470



## Nakadilinj (Don) Namundja



Burarr - water goanna #11919-11, acrylic and ochre on paper 61 x 41cm, **mounted \$660**



Dilly Bag and Sand Palm #4695-10 acrylic and ochre on paper, **mounted \$360**



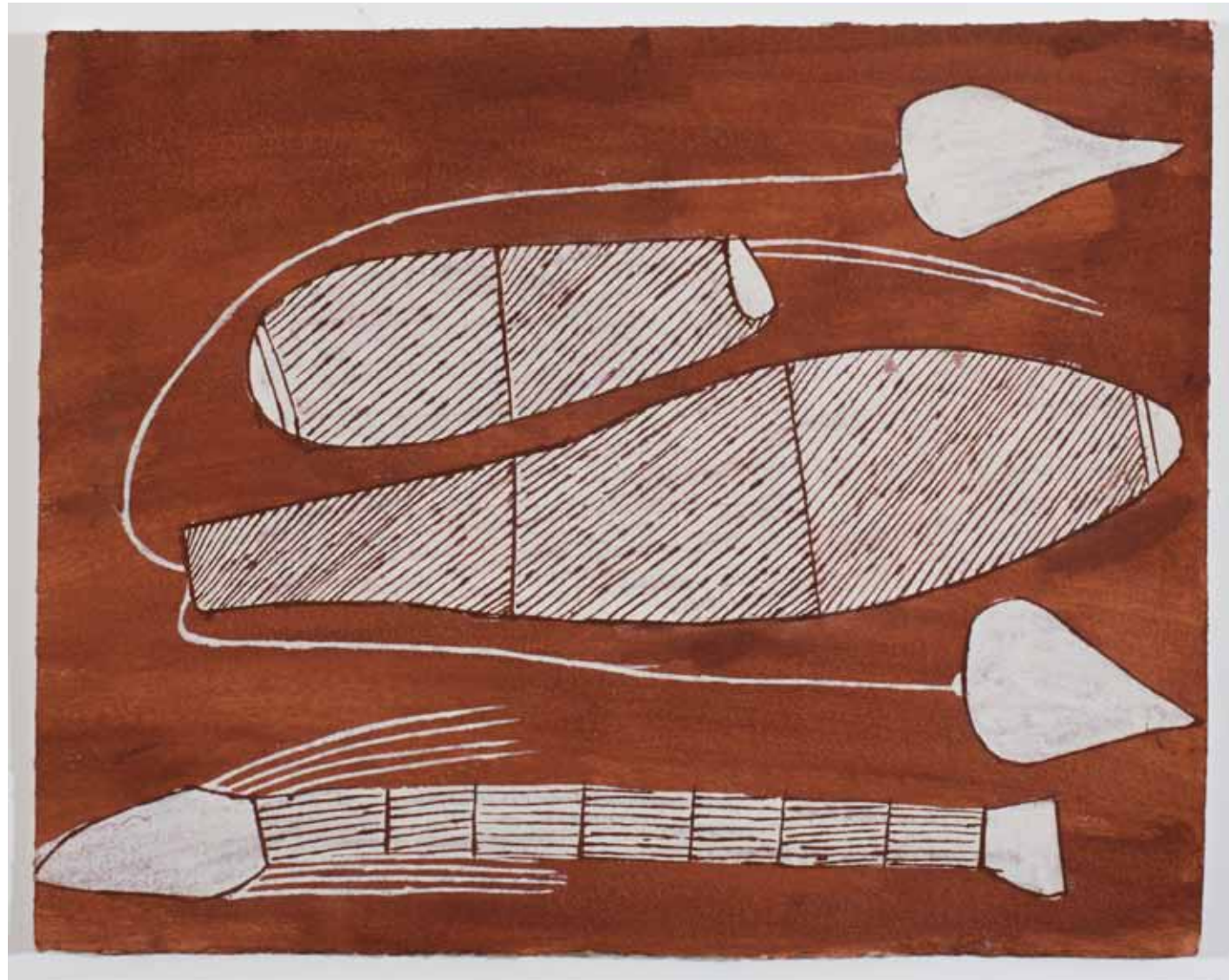
# Nakadilinj (Don) Namundja



Djen - fish caught in log #2795-10, acrylic and ochre on paper, 30 x 41cm, mounted \$360



# Nakadilinj (Don) Namundja



Bush Foods-Yam, Dilly Bag #6350-08, acrylic and ochre on paper, 30 x 41cm, mounted \$360



# Allan Nadjamerrek



Kuluybirr - saratoga #7414-11, acrylic and ochre on paper, 51 x 76cm, framed \$1240



# Allan Nadjamerrek



Ngurrudu (Emu) # 7525-11, acrylic and ochre on paper, 61 x 41cm, framed \$1080



Barrk and Worlerrk #6764-11, acrylic and ochre on paper, 76 x 51 cm, mounted \$840



# Allan Nadjamerrek



Dunbuhmanj (Black Bream) and Burarr (Water Goanna) #2379-09 ochre on paper, 41 x 61cm, mounted \$660



# Allan Nadjamerrek



Ngalmangiji - Long Neck Turtle #7612-11, acrylic and ochre on paper, 61 x 41cm, **mounted \$660**



Burarr - water goanna, #6587-08, acrylic and ochre on paper, 30 x 41cm, **mounted \$360**



# Maralingurra (Maath) Nadjamerrek



Karrarbada - long yam #8400-11, acrylic and ochre on paper, 31 x 41cm, **mounted \$360**



Yawk Yawk #9041-11 ochre on paper, 76.5 x 51cm, **framed \$1240**



# Maralingurra (Maath) Nadjamerrek



Ngurrurddu (Emu) #9433-11, acrylic and ochre on paper, 76.5 x 51cm, **mounted \$840**



Sugarbag Man - Wakewaken #12071-11 ochre on paper, 76.5 x 51cm, **mounted \$840**



# Namarnyilk (Gavin) Nadjamerrek



Ngalyod (Rainbow Serpent) #2569-09 acrylic and ochre on paper, 51 x 76 cm, mounted \$840



# Namarnyilk (Gavin) Nadjamerrek



Two Brothers and King, #8341-11 acrylic and ochre on paper, 52 x 76cm, mounted \$840



# Namarnyilk (Gavin) Nadjamerrek



Ngarrbek (Echidna) #8118-07 acrylic and ochre on paper, 41 x 61 cm, mounted \$660



# Namarnyilk (Gavin) Nadjamerrek



Ngalmangiyi - Long Neck Turtle #8342-11, acrylic and ochre on paper, 52 x 76cm, mounted \$840



# Namarnyilk (Gavin) Nadjamerrek



Mimi Hunting Ngurrdu #5133-08, acrylic and ochre on paper, 61 x 41cm, mounted \$660



# Namarnyilk (Gavin) Nadjamerrek



Ngalyod - Rainbow Serpent #9035-11, acrylic and ochre on paper, 52 x 76cm \$790



# Manme Mayh: Gardens of the Stone Country

Manme Mayh: Gardens of the Stone Country explores the links between Indigenous cultural heritage, environment and aesthetic traditions of artists from the Stone Country of western Arnhem Land through food and plants (manme) and animals (mayh).

Presented by artists from Injalak Arts in western Arnhem Land in conjunction with Nomad Art Gallery.

The artists selected for this project represent a small and unique group of senior and emerging and artists who are actively maintaining the distinctive practise associated with the traditions of rock art painting in western Arnhem Land and the knowledge it purveys. The artists are Kalarriya Jimmy Namarnyilk (dec), Don Namundja, Allan Nadjamerrek, Maralngurra (Maath) Nadjamerrek, Namarnyilk (Gavin) Nadjamerrek and Ray Nadjamerrek

The Stone Country of Western Arnhem Land also known as the plateau country runs into Kakadu National Park joining the people of both lands. The rocky outcrops of the escarpment dominate the landscape while adjacent floodplains, permanent rivers and billabongs are abundant with life of countless species of animals and plants.

Manme Mayh: Gardens of the Stone Country focuses on the native plants and animals integral to the culture and traditions of the Kunwinjku speaking people. The exhibition highlights cultural associations the Kunwinjku people have with species that include the echidna, possum, fruit bats, the kangaroo, black wallaroo, rock-rat, Oenpelli python, water lilies, crocodiles, turtles, fishes, yams, and other plants that provide both food and tools.

The artists selected for this project represent a small and unique group of senior and emerging and artists who are actively maintaining the distinctive practise associated with the traditions of rock art painting in western Arnhem Land and the knowledge it purveys.

Manme Mayh: Gardens of the Stone Country is in the memory of renowned artist and clan leader Bardayal Nadjamerrek AO (dec).



For more information please call  
**Nomad Art Gallery**  
Parap, NT  
08 89816383  
[gallery@nomadart.com.au](mailto:gallery@nomadart.com.au)