





Two Tasmanian devils (*Sarcophilus harrisii*) with simple x-ray style features superimpose earlier rock paintings. Duluburreni locality, Mok clan estate. Photo courtesy of the Museum and Art Gallery of the Northern Territory

Manme Mayh: *Gardens of the Stone Country*



Manme Mayh: *Gardens of the Stone Country*

Contents

| | |
|----|---|
| 5 | Foreword – Angus Cameron and Lorna Martin |
| 7 | Introduction – Donna Nadjamerrek and Lois Nadjamerrek |
| 8 | Art Work |
| 8 | Kalarriya (Jimmy) Namarnyilk (dec) |
| 14 | Nakadilinj (Don) Namundja |
| 19 | Allan Nadjamerrek |
| 23 | Namarnyilk (Gavin) Nadjamerrek |
| 27 | Maralngurra (Maath) Nadjamerrek |
| 31 | Acknowledgements |
| 32 | Artist Biographies |

Djurrih Kawokbebme, the southernmost waterfall on the Liverpool River. The Mok clan estate, Ankung Kunred –Wild Honey Country – ends some ten kilometres upstream.

Photo courtesy of the Museum and Art Gallery of the Northern Territory (MAGNT).



The Stone Country of Western Arnhem Land is a unique, remote and richly diverse landscape. It encompasses a vast sandstone plateau escarpment, which rises out of low lying alluvial plains and wetlands. The plateau extends towards the coast in the northwest and gradually merges with the inland plains in the south.

Over millions of years water has shaped the sandstone into a rugged mosaic of rivers, gorges, waterfalls and ravines. In contrast, wide valleys provide habitats for a vast array of plants and animals. According to Kunwinjku traditional knowledge, water from the **nagudji andjeuk** (one rain) arrives over a composite cycle of six seasons and not only sculpts the contours of the plateau, but forms the landscape of the lowlands. The six seasons are indicated by the presence of certain flora and fauna that respond to the changing conditions. This cycle is captured by the mythology and knowledge of the Kunwinjku culture.

Kurrung is the time when the clouds and humidity start to build and the first rains arrive. A new flush of green grass stirs insects into life and fruits like **mankurndal** (black plum) appear. As the rains increase **namarnkol** (barramundi) are flushed out of waterholes, streams are transformed from isolated bead-like pools into rapidly flowing waterways.

Kudjewk (the wet season) follows as the monsoon delivers relentless rain, cyclones, winds and lightning. The plateau is saturated and the water cascades off the escarpment into waterholes, swamps and waterways. As the lowlands fill, a massive inland reservoir is created with sandstone islands that stretch beyond the horizon. It is the appearance of **karrbarda**, (long yam), **manimunak** (magpie geese) and the many fruits, that make this a season of plenty.

At the height of **kudjewk** these deeply mysterious wetlands erupt with life and become one of the most important tropical habitats in the world. Soon after **ngalkordow** (brolgas) and the **djilikuybi** (whistling ducks) hatch. The young chicks signal the beginning of the transition from turbulent water to the stillness of an inland freshwater sea. The water levels drop on the plains and rivers. It is the time to find **ngalmangiyi** (fresh water turtles) that live in the mud, feeding on the insects first stirred up by **kurrung**. This is **bankereng** the last of the storms. The temperatures and the humidity are still high, while the water now trickles from the sandstone aquifer.

Slowly the nights become cooler, the winds swing to the south-east as **yekke** (the early dry season) approaches. It is a good time for hunting **kunj** (kangaroos), fat and easy to get to after the abundance of 'The Wet'. The **andjamko** (grevilleas), **mandjoh** (acacias), **manbidubidu** (eucalypts flower) and **mandem** (water lilies) are everywhere. Western Arnhem Land burns as **manwurrk** (hunting fires) and mosaic burning spread across the drying land.

Wurrkeng is the heart of the dry season and there is still plenty of food around. **Mankung** (sugar bag) is abundant and the **ankong** (stringy bark) is harvested to make string bags. Slowly the wetlands become dry and cracked, the **ngalmangiyi** (turtles) dig deeper into the moist earth and the water birds flock around the remaining water holes. Later thunderclouds build again, signaling the cyclic return of **kurrung**.

Western Arnhem Land is also the home to the Mok Clan of the Kunwinjku people who have inhabited these lands for an uninterrupted period extending beyond 40,000 years. Their connection to the country is deeply ingrained in every aspect of life.

Kunwinjku people believe ancestral beings travelled through the country creating landmarks and places in which they continue to dwell, known as **Djang** (Dreaming). Accordingly the Kunwinjku people maintain a profound and ancient visual tradition. Paintings on rock, bark and (more recently) paper connect with ancient rituals, stories and spiritual associations. Rendered simply and directly with white on red ochre, these paintings narrate the soul and spirit of the Stone Country and its inhabitants.

Manme Mayh: Gardens of the Stone Country honors a continuing cross-cultural dialogue, where cultural traditions intersect in a spirit of respect and sharing. Where the passing of knowledge from one generation to the next is combined with the sharing of knowledge from one cultural tradition to another, culminating in the preservation of our shared national heritage.

Manme Mayh: Gardens of the Stone Country expresses the resilience and connections between people, stories, place, plants and animals that live and thrive in the Stone Country of Western Arnhem Land.

Angus Cameron and Lorna Martin

In the Djabidj Bakoluy waterhole lays a sacred Wild Honey Log guarded by Ngalyod the Rainbow Snake and other spirit beings that inhabit the Mok clan estate.

Photo courtesy of the MAGNT



Bardayal Nadjamerrek AO (dec) - **Kunbid Nuye** (His Hands)
etching 2009, 57 x 70 cm

This etching depicts the outline of the artist's hands. Hand stencils are an aspect of the rock art tradition. They were created when Aboriginal people put ochre in their mouth and blew it across their hand, which rested on the rock surface. Hand stencils are considered to be a type of signature in the rock art tradition.

Bardayal was considered one of the last rock art painters of western Arnhem Land, however his legacy lives on through his children and his grandchildren.

From the heart of Ankung Kunred (sugarbag country) of the Arnhem Land plateau, Bardayal brought the sacred stories of ancestral beings and fauna and flora to life.

'My ancestors gave me this place and I myself have a longing for this country.' *

Bardayal Nadjamerrek AO (dec)

Manme Mayh: Gardens of the Stone Country is a tribute to the life and work of the highly respected and influential statesman Bardayal Nadjamerrek AO (dec). The artists in this exhibition carry on the time honoured style taught to them by this great man (their grandfather). Some of the artists are also rangers who manage the land on the principles and knowledge passed down over countless generations.

* Source: *Ankung Kunred-Wild Honey Country* @ MAGNT 2012

“The artists bring to your lives the stories, the ancestors, the spirit world, nature and knowledge of the land, and we are happy that they did that.”

Our father was the last of the Nawarddeken, (stone country) artists who painted on rock. Like the artists in this exhibition, he also painted on bark and fine art paper. When our family looks at these paintings we are reminded of my father and how he taught us, and his grandchildren, and his nephews to paint our country. His fellow countrymen the late Kodjok and Don Namundja who have painted alongside my father, also paint in the style given to them by their spiritual ancestors. It was their belief that this is the only way to paint. The family is happy that we, (and you) can look to these paintings and see and hear some things about our country.

Up until recently Kodjok (dec) and Don Namundja were the only two senior artists still painting in Kunbarllanjnja (Gunbalanya) for ceremonies that are no longer practised. They give us the story only in their paintings and this is very important. It is good for us that we see the elders sharing this opportunity with our young artists. While they are making paintings of traditional knowledge, our people can continue to learn.

Let us tell you about our country, Ankung Kunred (Honey Country.) This country has close ancestral ties with sugar bag Dreaming. It is on the Arnhem Land plateau and our clan name is Mok. Our country Ankung Kunred is home to many plants and animals and ancestral spirits that are important to us. When we look closely at these paintings we can see some things sacred to us. The bees, the plants, the honey, the sacred honey (hollow) log and the honey trees that are protected by spiritual ancestors and powerful Ngalyod.

Gavin, Allan, Maarth and Ray are painting some of the stories of our ancestral lands and through these paintings we can learn what the stories tell us about the spirits, the plants and the animals and sometimes ceremonies. While these young people are painting we keep hearing the names, the knowledge and remember that we must continue to care for the land and the Dreaming sites and also continue to return there with our young people.

We share the love our father had for our country, Ankung Kunred by learning from the stories of our ancestors, and of the spirits living in our ancestral lands. My family and my mother are proud, as we know that some of our young people have listened well and still live on country and are caring for it.

Look at these images and you will see the things my father believed in all of his life, the things he protected through ceremony and ritual.

Knowledge is important as it helps us care for our family and our country properly. If you look carefully at the work in this exhibition and open your minds and hearts to what you see, you will take away some knowledge about our country and its people and our culture. Like my father these artists put their knowledge into their art.

Donna and Lois Nadjamerrek
on behalf of their family

In Memoriam

Kodjok Namarnyilk (Circa 1940 – 23 June 2012)

It is with profound sadness we acknowledge the passing of the artist *Kodjok Namarnyilk* during the development of this exhibition. In doing so we thank the family for allowing the exhibition to continue. It is the wish of the family to celebrate the legacy of this significant Australian artist and ceremonial leader by sharing his art and stories through the exhibition of his work.

In observing and respecting cultural protocol in all contexts other than the exhibition and associated publications the family requests that, at this time, the artist's 'sorry name' or subsection name Kodjok be used.



Kalarriya (Jimmy) Namarnyilk (dec) - **Ngalkordow** (Brolga)
acrylic and ochre on paper, 41 x 62 cm

Ngalkordow (brolga) is **duwa** (all people, plants and animals are either **duwa** or **yirridjdja** moiety). He has a **bunggul** (song) that belongs to the **Balngarra** clan group. He is good tucker. The plants are **mankuladj** (water chestnut). They are tucker for **ngalkordow**, **bininj** (people) and for **manimunak** (magpie goose) too. They grow next to the billabong and you can eat him anytime. The one in the paintings have flowers. They make flowers at anytime. Sometimes you roast him, sometimes nothing, you eat him like that.

Kodjok Namarnyilk (dec)

Description

Language name: **Mankuladj**

Scientific name: *Elaeocharis dulcis*

Family: Cyperaceae

Common name: Water Chestnut, Spike-rush

Description: This leafless rush grows to 1.5m high and sometimes bears tubers that can be up to 10 mm in diameter. Its hollow cylindrical stems are divided internally by fine partitions.

Flowering: Wet Season

Habitat: The spike-rush occurs in dense stands in permanent water bodies.

Distribution: "Top End" Northern Territory, New South Wales north coast, Queensland, Western Australia and Asia.

Reference

http://www.rbgsyd.nsw.gov.au/education/Resources/bush_foods/Eleocharis_dulcis

Language name: Ngalkordow

Scientific name: *Grus rubicundus*

Common name: Brolga

Family: Gruidae

Description: Tall, large, red head, dark legs, grey with black flight feathers and long, outstretched neck and legs. Immature is brown with a peach-coloured head.

Size: 80-100cm, male larger

Habitat: Grasslands and floodplains, and open woodland during the wet season.

Diet: Rhizomes of sedges in the wetlands.

Breeding: Jan - Oct. Famous for their communal nuptial displays when birds dance. A pair face each other, shaking half-open wings and leaping in the air.

Distribution: Northern Australia, Papua New Guinea

Reference:

Birds of Australia's Top End. Denise Lawungkurr Goodfellow, 2005

Description

Language name: Ngankarrarndalk

Scientific name: *Triodia microstachya*

Family: Poaceae

Common name: Spinifex

Description: Resinous tussock-forming perennial, grass, 0.3 - 2.5m high. Leaf sheaths glabrous on surface, leaf blades curved or curled. Flower spikes large, crowded. Flowers green to purple-red.

Flowering: Jan to May.

Habitat: Coastal beach and dunes, rocky sandstone.

Distribution: "Top End" Northern Territory, Western Australia and Queensland

Reference

** A Preliminary List of Kundedjnjenhmi Plant Names

<http://florabase.dec.wa.gov.au/browse/profile/691>

<http://ausgrass2.myspecies.info/content/triodia-microstachya>



Kalarriya (Jimmy) Namarnyilk (dec) - **Nadjnem** (Black Wallaby)
acrylic and ochre on paper, 62 x 41 cm

Nadjnem (black wallaby) is painted here with **ngankarrarndalk** (spinifex grass). **Nadjnem** eats the **ngankarrarndalk**. **Nadjnem** is good tucker you can eat him anytime.

Kodjok Namarnyilk (dec)

'Ankarrarndjalhkarndjal yekkeken dalukorro kangun barrk, balemno kalnokamarnburren. Kuwarddebuldjarn karri darnki njilhmi yiman kayime Kumarrirrbang'.

'In the cool dry season when the southeast winds blow, the black wallaroo eats the triodia grass and it increases their fat and bone marrow. It grows close to freshwater springs such as at Kumarrirrbang.'

Bardayal Nadjamerrek AO (dec)**



Kalarriya (Jimmy) Namarnyilk (dec) - **Ngalmangiyi** (Long-necked Turtle)
acrylic and ochre on paper, 41 x 62cm

Ngalmangiyi (long-necked turtle) are caught with a **kubba** (crow bar), a thin iron bar to about the waist set in a wooden handle. The mud of the flood plain is probed in particular locations as the billabongs start drying up. The telltale thud of iron striking shell exposes the turtle lying dormant in the mud. The turtles are usually kept alive in a sack or mailbag until it is time to cook. They are killed by bending the head back to break the neck.

The turtle is then placed on a flaming fire. After the skin is scorched the turtle is removed from the fire and little fleshy appendages on the turtles chin are held tightly in the fingers and are used to peel back the skin from the bottom jaw and the underside of the neck which when pulled away from the animal brings with it the oesophagus. The oesophagus is then placed back on the fire to cook briefly and is shared as a snack while waiting for the rest of the turtle to be cooked. After the fire has died down the turtle is placed upside down on the coals to cook in the shell. The hole left from where the oesophagus was removed is sometimes kept clear with a piece of fine grass to release steam from inside the shell and the cooking meat. When the turtle is cooked it is often split open with the **kubba** and the meat shared.

Description

Language name: **Ngalmangiyi**

Scientific name: *Chelodina rugosa*

Common name: Northern Long neck turtle,
Snake neck turtle

Description: A fast-growing, carnivorous turtle that occupies seasonally ephemeral habitats. The turtle mostly feeds nocturnally in the wild, eating a variety of crustaceans, molluscs and fish. Depending on environmental conditions the turtle may undergo periods of dormancy during the dry season. Mating occurs during December and January soon after turtles emerge from dormancy. Nesting season spans some eight months from the late wet season until mid dry season, during which the turtle lays multiple clutches of eggs in underwater nests. Nesting may continue for longer when waterholes dry later following prolonged wet season rains. Females can be easily recognised by the very short, stubby tail.

Habitat: Freshwater swamps, billabongs, waterholes and slow-flowing rivers

Distribution: Lowland regions throughout northern Australia and in southern New Guinea

Reference

http://aerg.canberra.edu.au/reprints/1999_Kennett_reproduction.pdf

http://www.carettochelys.com/macrochelodina/macrochelodina_rugosa.htm

http://en.wikipedia.org/wiki/Chelodina_rugosa

http://espace.library.uq.edu.au/eserv.php?pid=UQ%3A9256&dsID=_Chelonia_rugosa.pdf

Description

Language name: **Ngarrbek**

Scientific name: *Tachyglossus aculeatus*

Family: Tachyglossidae

Common name: Short-beaked Echidna

Description: Terrestrial, solitary, active day or night depending on temperature. Light brown to dark brown fur. Dark tipped cream spikes on back and sides. Long tubular snout. Front foot has five toes with broad claws. Long claws on second and third toes of hind foot. Male has ankle spurs. Female has temporary pouch. Length: 300 - 450mm. Weight: 2-7 kg. Breeding July and August.

Habitat: Any habitat with suitable food and shelter

Distribution: Australia wide

Reference

Field guide to Australian Mammals Author: Jones C., Parish S.



Kalarriya (Jimmy) Namarnyilk (dec) - **Ngarrbek** (Echidna)
acrylic and ochre on paper, 76 x 51cm

"The **djang** (story) for **ngarrbek** (echidna) is part of the **Kunabibi** ceremony. **Ngarrbek** camps in the rocks and **kuwarderurrk** (cave) during the day and comes out at night. The plant is for **kudjurle** (shade). The **lorkkon** (hollow log) in the painting is where he finds **djalang** (termites). The different type of termites from the termite mounds is called **djak**. When you cook him you chop off the spines with an axe or knife and take the guts out. When you take the guts out you only eat the liver, the rest is no good. You put hot rocks inside the guts and cook the meat on the hot coals."

Kodjok Namarnyilk (dec)



Kalarriya (Jimmy) Namarnyilk (dec) - **Karrbarda** (Long Yam)
acrylic and ochre on paper, 61 x 38cm

The old people been using **karrbarda** (long yam) for a long time. Now with **balanda** (non-indigenous) tucker I'm getting sick, before with this one, no sickness. You can get biggest mob **karrbarda** at Gummaringbung (outstation between Gunbalanya and Maningrida). You can see **mudno** (hair) in this painting. You burn it off first before you roast it in the hot sand under the coals.

Kodjok Namarnyilk (dec)

Description

Language name: **Karrbarda**

Scientific name: *Dioscorea transversa*

Family: Dioscoreaceae

Common name: Long yam

Description: Herb with annual twining stems 2 – 4m long. Leaves heart shaped to broad-triangular, usually 5 – 12cm long, 2 – 8cm wide with a pointed tip, surface smooth, petiole 1 – 9cm long. Separate male and female plants. Male plants produce flower spikes 3 – 6cm long, female plants produce flowers 10 – 20cm long. Fruit is a capsule 20 – 30mm long with lobes 15mm wide; seeds are 5mm long with a surrounding wing. Tubers, cylindrical and rarely greater than 10mm diameter, often deep in the soil. Small globular bulbils present in some leaf axils.

Habitat: Moist open forest

Distribution: Northern Territory, Queensland, Western Australia and New South Wales

Reference

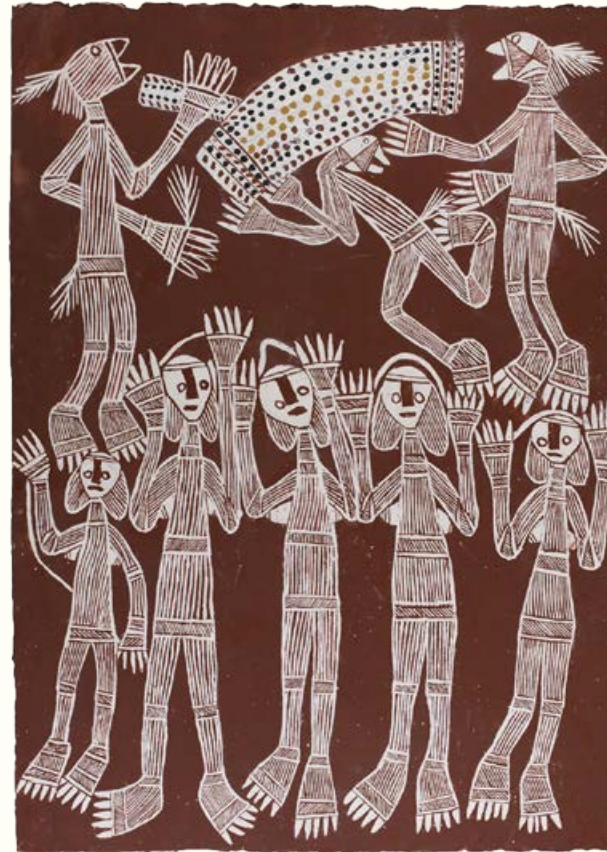
<http://plantnet.rbgsyd.nsw.gov.au/cgi-bin/NSWfl.pl?page=nswfl&lvl=sp&name=Dioscorea-transversa>

http://www.rbgsyd.nsw.gov.au/education/Resources/bush_foods/Dioscorea_transversa

http://keys.trin.org.au:8080/key-server/data/oeof0504-0103-430d-8004-060d07080d04/media/Html/taxon/Dioscorea_transversa.htm

Additional information

The story of the Ubarr ceremony has been recorded and shared by other old men in the past but because men and women are kept separate for this ceremony and have different songs and dance, the artist preferred that the story was not shared.



Kalarriya (Jimmy) Namarnyilk (dec) - **Ubarr Ceremony**
acrylic and ochre on paper, 103 x 76cm

The **Ubarr** ceremony been happen over there next to Arrkuluk Hill (near Gunbalanya). Ceremony men for that one all finished now. That ceremony is finished. No one knows that ceremony any more. We still have the **Kunabibi** ceremony for **duwa** (moiety) and **Yaburdurrwa** ceremony for **yirridjdja** (moiety).

Kodjok Namarnyilk (dec)



Nakadilin (Don) Namundja - **Djen** (fish) in a Log, Take Home in Dilly Bag

acrylic and ochre on paper, 30 x 41cm

The painting shows two **namardaka** (nail fish), a log representing **mandjimdjim** (river pandanus) and two **djerrh** (dilly bags).

The name for small nail fish is **marrngunj**. Sometimes you see these in the billabong in big groups. Big **namardaka** have yellow on their belly like in the painting.

The **mandjimdjim** grows on the edge of the billabong and the **namardaka** lives amongst its roots and trunks. **Kedjebe** (Arafura file snake) and **warradjan** (pig nose turtle) also hide in the shadows of the roots and **kundulk** (trunk). **Warradjan** also eat the fruit of the **mandjimdjim**.

Mandjimdjim is no good for weaving the **djerrh**, for that you have to use **manbelk** (spiral pandanus).

Namardaka are caught in the dry season and the wet season. Now they are caught with a fishing line but before in the old time people used to catch them with **walabi** (bush net). To do this some people have to sit down in the water in a line, each person with their own **walabi**, then the rest of the people scare the fish to the line where they are scooped up. I (Don) prefer to cook **Namardaka** by roasting them on the ashes of the fire. You can also boil them into a soup in the billycan especially in the wet season.

Nakadilin (Don) Namundja

Description

Language name: **Namardaka**

Scientific name: *Neosilurus ater*

Family: Plotosidae

Common name: Nail fish (after the poisonous spine or nail on the dorsal and lateral fins), Eel-tail catfish and Black catfish.

Size: Up to 50cm, usually about 30cm

Habitat: Likes bottom of swift flowing sections of rivers and streams, also found in still water

Diet: Aquatic insects, small crustaceans and detritus

Distribution: Timor Sea and Gulf of Carpentaria drainages; also in southern Papua New Guinea

Reference

<http://www.canetoads.com.au/fwfish1to27.htm>

<http://www.environment.gov.au/ssd/publications/special/pubs/fishes-2.pdf>

Description

Language name: Mankurlurrudj

Scientific name: *Livistona humilis*

Family: Arecaceae

Common name: Sand palm

Description: Slender single-stemmed fan palm 2 - 5m high, trunk 8 - 12cm diameter. Bark slightly rough, grey and ringed. Leaves stiff, smooth, fan-shaped, blade 30 - 50cm long, dark green, deeply divided more than half-way into numerous narrow pointed lobes; stalk 40 - 70cm long with sharp prickles along the edges. Flowers very small, cream to yellow, 0.2 - 0.4cm across, numerous on arching branched inflorescence 1 - 2m long produced above the crown, on smooth stiff stalks 1 - 1.5m long. Fruit smooth, oval, thin-fleshed, 1 - 1.5cm long, purple-black when ripe.

Flowering: Sep - May. Fruiting: Jan - Jul.

Habitat: Common in open forest and woodland, mostly on sandy or sandy lateritic soils, often forming dense stands beneath the eucalypts.

Distribution: Endemic to the Northern Territory. Arnhem Land, Alligator Rivers, Victoria River, Darwin, Katherine regions.

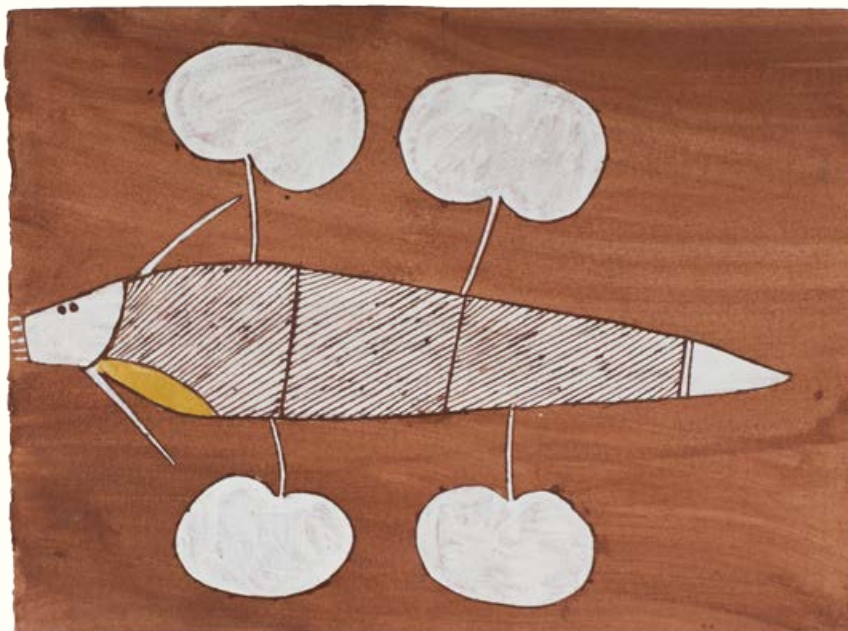


Nakadilinj (Don) Namundja - **Dikkala** (Bush Tucker) for the Mimi Spirits

acrylic and ochre on paper, 61 x 41cm

This painting has two **djerrh** (dilly bags) and a palm tree in the middle. The palm tree is **mankurlurrudj** and it grows in open areas, dry places next to the stony country. Black and purple berries are food for **kurdukadji** (emu). The top part in the middle used to be eaten by the old people. They can peel it and pound it to make a drink or chew it like sugar cane.

Nakadilinj (Don) Namundja



Nakadilinj (Don) Namundja - **Namardaka** (Nail fish)
acrylic and ochre on paper, 30 x 41cm

This painting shows **namardaka** (nail fish) and the **manworr** (leaves of a water lily). There isn't just one name for water lily. You call it **manbardmo** if you are talking about the stem and the flower, **mandem** for the root and **barrdjungka** for the fruit. You eat the **manbardmo**, **mandem** and the **barrdjungka**. The **barrdjungka** is found under the water and is food for (magpie goose), **djilikuybi** (wandering whistling duck), and for **bininj** (Aboriginal people) too. The **barrdjungka** is cooked or ripe when it is soft and you can peel it and eat it like that but I like to roast it on the hot ashes.

Nakadilinj (Don) Namundja

Description

Language name: **Namardaka**

Scientific name: *Neosilurus ater*

Family: Plotosidae

Common name: Nail fish (after the poisonous spine or nail on the dorsal and lateral fins), Eel-tail catfish and Black catfish.

Size: Up to 50cm, usually about 30cm

Habitat: Likes bottom of swift flowing sections of rivers and streams, also found in still water

Diet: Aquatic insects, small crustaceans and detritus

Distribution: Timor Sea and Gulf of Carpentaria drainages; also in southern Papua New Guinea

Reference

<http://www.canetoads.com.au/fwfish1to27.htm>

<http://www.environment.gov.au/ssd/publications/special/pubs/fishes-2.pdf>

Description

Language name: **Dikkala**

Scientific name: *Cartonema spicatum*

Family: Commelinaceae

Common name: None

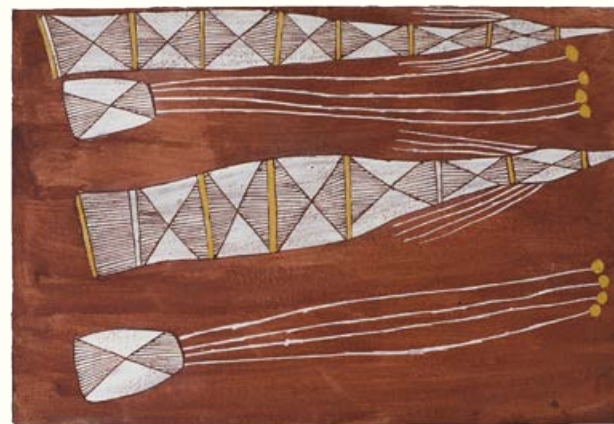
Description: Slender perennial herb 20 - 30cm high, with hairy stems, commonly branching at the base. Leaves long, narrow, hairy, 15 - 25cm x 0.4 - 0.7cm, grass-like with longitudinal veins, pointed tip, sheathed at base. Flowers yellow with hairy calyx lobes, about 2cm across, many on dense erect terminal spikes 3 - 10cm long, usually several spikes per plant. Fruit small, smooth capsules 0.5 - 0.8cm long enclosed in hairy papery bracts.

Flowering: Jan - Mar.

Fruiting: Feb - Mar.

Habitat: Open forest and woodland, commonly on disturbed areas on gravelly or lateritic soils; sandstone escarpment country, on rocky slopes and dissected outcrops.

Distribution: 'Top End' Northern Territory; Queensland and Western Australia



Nakadilinj (Don) Namundja

Bush Foods, Yam, Dilly Bag (top)

acrylic and ochre on paper, 30 x 41cm

Nakadilinj (Don) Namundja

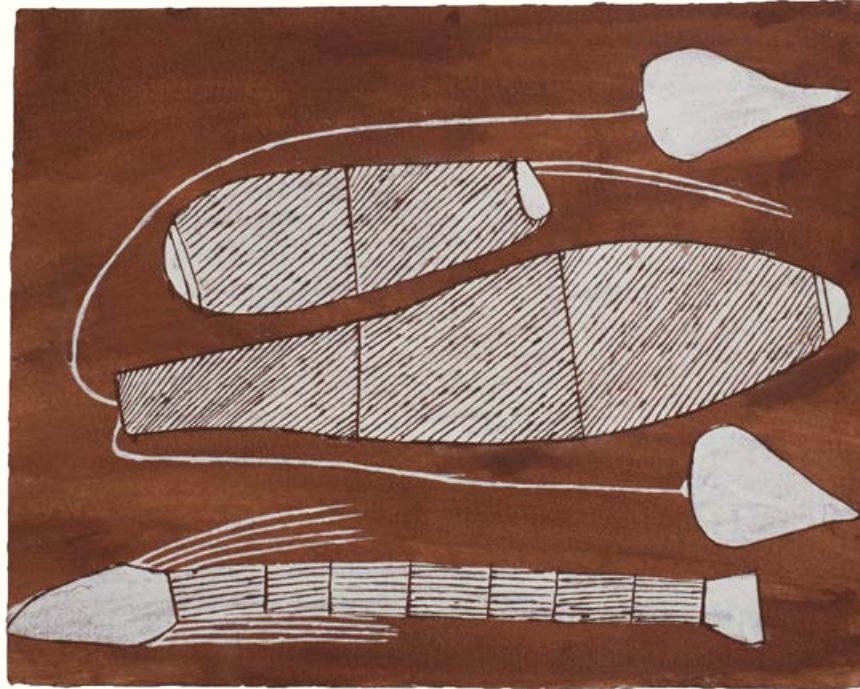
Dikkala (bush tucker) (bottom)

acrylic and ochre on paper, 30 x 62cm

"These paintings have two **marrunj** (palm trees) and two **dikkala** (bush tucker) and the other one has **dikkala** and a **djerrh** (dilly bag). These two don't grow in the same place. The **marrunj** grows next to the spring. You can find them on my (Don's) country in a place called **Mankolod**. The **dikkala** grows on the dry plains. The old people used to eat the **marrunj**, the inside part at the top, not the bottom part that's just wood. We can boil it or cook it in the earth oven. You can eat this one at any time of the year.

You can see the yellow flowers on the **dikkala** and the yellow circle, which is the part before the flowers. You have to wait for the flowers before you dig it up. The flowers come in **Kudjewk** (wet season). We have six seasons. The **dikkala** is like a potato, you dig it up and cook it on the ashes and peel it before you eat it. The **kalkberd** (euro or common wallaroo) digs the roots and eats the **dikkala** as well."

Nakadilinj (Don) Namundja



Nakadilinj (Don) Namundja - Bush Foods – Yam, Dilly Bag

acrylic and ochre on paper, 30 x 41cm

"This painting has a **djerrh** (dilly bag), a **marrunj** (Carpentaria palm) and a **karrbarda** (long yam) in the middle. The **karrbarda** used to be a very important bush tucker. It grows in sandy soil and sometimes gets as big as half a meter long. The time to dig **karrbarda** is in **yekke** (early dry season) when the leaves like in the painting are still green but the flowers and fruits are dry. Today we use a crow bar but the old people used a **kunbarlkbu** (digging stick). The best digging stick is made from **mandubang** (ironwood). When you dig up the **karrbarda** you put the narrow part at the top back in the ground to grow again. The old people used to go a favourite place for digging **karrbarda** and camp for a couple of nights."

Nakadilinj (Don) Namundja

Karrbarda came from **Warramungunjdji** or some different people call her **Yingana**. She came from Arafura Sea carrying lots of kids in her dilly bag. As she went through Arnhem Land she left her kids behind and gave them their clan names and language. She planted **karrbarda** and all the different bush tucker as she went.

Description

Language name: **Mandjabuldjabul**

Scientific name: *Solanum echinatum*

Family: Solanaceae

Common name: Wild Tomato

Description: Erect or semi-prostrate shrub to 0.5m high, most parts hairy, slender thorns on stems and stalks. Leaves densely hairy to velvety, ovate, variable size, blade mostly 3- 6cm x 2- 3cm, grey-green, stalk usually 1-3cm long. Flowers purple with yellow centre, 1.5cm- 2cm across, several on short inflorescences in leaf axils. Fruit globular fleshy berries 1- 1.5cm diameter, almost completely enclosed by thorny calyx, pale green when ripe, drying light brown.

Flowering: Periodic

Fruiting: Periodic

Habitat: Sandstone country, on stony slopes and amongst rocky outcrops and dissected outliers.

Distribution: Arnhem Land, Alligator Rivers, Victoria River, Darwin, Katherine, Gulf regions, Queensland and Western Australia.

Description

| | |
|------------------|--|
| Language name: | Barrk (male), Djukerre (female) |
| Scientific name: | <i>Macropus bernardus</i> |
| Common name: | Black Wallaroo, Bernard's long-foot |
| Family: | Macropodidae |
| Size: | This is the smallest of the wallaroos |
| Male: | Snout to base of tail: 595 - 725mm Base of tail to tip: 545 - 640mm Weight: 19 - 22kg |
| Female: | Snout to base of tail: avg 646mm. Base of tail to tip: avg 575mm. Weight: avg 13kg |
| Habitat: | Monsoon forest, woodland with sparse grass and shrubs. |
| Diet: | Grass, ground plants, shrubs |
| Distribution: | Found on the Arnhem Land escarpment and plateau. It is classified as near threatened, mostly due to its limited distribution** |

| | |
|------------------|---|
| Language name: | Mandjungkurk |
| Scientific name: | <i>Gardenia fucata</i> |
| Family: | Rubiaceae |
| Common name: | Bush Gardenia |
| Description: | Small compact tree 3 - 4m high with usually crooked branches. Bark smooth, yellow-orange. Leaves: opposite, towards ends of branchlets, narrow to oval, blade 3-6cm x 0.8-1.8cm, slightly shiny dark green. Flowers large, white, scented, 2-4cm across, solitary, produced terminally. Fruit fairly smooth, about 2cm x 1.5 -1.8cm, brown when ripe. |
| Flowering: | Sep-Feb. |
| Fruiting: | Nov- Mar. |
| Habitat: | Sandstone escarpment country, on the plateau, steep hills and slopes, amongst rocks and boulders in mixed shrubby low woodland. |
| Distribution: | Arnhem Land, Alligator River region and Queensland. |

References

Field guide to Australian Mammals Author: Jones C., Parish S.
 ** http://en.wikipedia.org/wiki/Black_wallaroo
 Native Plants of Northern Australia Author: John Brock, 2001



Allan Nadjamerrek - **Barrk and Worlerrk**

acrylic and ochre on paper, 76 x 51cm

This painting is about bush tucker and hunting. The tree might be one that the kangaroos lay down under when they have had a good feed. You can see them doing this when you are out hunting. There is a **bininj** (male) and a **daluk** (female). When you are out in the bush you always see husband and wife together. You can hunt both the **bininj** and the **daluk** but sometimes the **bininj** might be too big to carry so you hunt the **daluk**. The hunter who kills the kangaroo is only supposed to take the head and the rib bones, the rest has to be shared. Now we hunt with a **mako** (rifle). **Mako** is the same name for the didgeridoo because it is a long tube. Just like **kunwarrede**, the word for coins or money is the same word for rocks.

The painting might be any type of kangaroo. It could be **kandakkidj** / **korlobbarr** (different dialect) (male) and **karndayh** (female) locally known as the big red or Antilopine wallaroo. It might be **kalkberd** (male) and **worlerrk** (female) or the common wallaroo or euro. It might also be **barrk** (male) and **djukerre** (female) black wallaroo.

The tree might be **mandjungkurk** (bush gardenia), which is a bush herb for cooking kangaroo but not for emu. Or the tree might be **mandjabuldjabul** (wild tomato). This is a favorite food for barrk.

The painting also shows some of the guts. The **kunwobe** (lungs) and the **kundurddu** (heart) are at the top and we cook this on the hot coals. The **mannjambadjan** (digestive system) is underneath and looks like three pieces in the painting and then the **manjamyayaw**, which is the long string one in the painting (digestive system). We eat both these. To cook the **mannjambadjan** we take out the grass and we cook it on the hot ashes, we don't need to wash it. To cook the **manjamyayaw** we take out all that grass and put the fat from around the guts inside like a sausage and cook it on the hot coals. This is my favourite part.

Allan Nadjamerrek



Allan Nadjamerrek - **Ngurrudu**, (Emu)
acrylic and ochre on paper, 61 x 41cm

The **ngurrudu** or **kurdukadji** (different dialect for emu) is a special food, a favourite especially for the old people. You must share it and you need at least four or five people to eat it. It has to be cut in special places.

You can hunt the emu at any time of the year but it is easier in the dry season after the grass has been burnt so you can see it but if you can get one in the wet season it has more fat. It is best to shoot him in the head or rib bone or leg. If he is still alive after you shoot him you hit it on the neck, below the head with a stick. Sometimes **ngurrudu** will chase you when there are chicks around. The **wirllarrk** (eggs) are also good to eat.

When you cook **ngurrudu** first you pluck the feathers and then you put it on the fire to burn the hairs (down). Then you take the guts out but you have to leave the heart inside you can't take it out not like with a kangaroo. You cook the guts on the hot coals and they have a really strong flavor. Next you put hot rocks inside the body and then bury it in the hot sand underneath the fire to cook. You also cook the **wirllarrk** in the hot sand under the fire. My (Allan's) favourite part is the leg.

The plant in the painting is **mandjliwirn** (Smilax). **Ngurrudu** eats the berries. He also eats the berries from **mankurlurrudj** (sand palm). The palm also makes good camouflage for **ngurrudu** because the feathers match the leaves so you can't see it. **Ngurrudu** uses the lump on his chest like in the painting to hit trees to make berries fall especially **mandudjmi** (green plum).

Allan Nadjamerrek

Description

| | |
|------------------|---|
| Language name: | Ngurrudu |
| Scientific name: | <i>Dromaius novaehollandiae</i> |
| Common name: | Emu |
| Family: | Casuariidae |
| Description: | A large, shaggy grey-brown bird with a long, bare bluish neck and powerful, three-toed legs. Plumage hangs over rump. Chick is striped brown and cream. |
| Size: | 140cm, female larger |
| Habitat: | Common in arid areas, rarer in the coastal north |
| Diet: | Insects, seed and fruit. |
| Breeding: | Mar - Oct. About ten dark green eggs are laid in a scrape and are incubated by the male alone for eight weeks. |
| Distribution: | Throughout Australia except Tasmania. |
| Reference | |

Birds of Australia's Top End. Denise Lawungkurr Goodfellow, 2005.

Descriptions

| | |
|------------------|--|
| Language name: | Mandjliwirn |
| Scientific name: | Smilax australis |
| Family: | Smilacaceae |
| Common name: | Smilax |
| Description: | Rambling climber grows to many metres high, wiry stems to 0.5cm, intermittently covered with sharp prickly thorns. Leaves alternate. Flowers, small off-white. Smooth globular berries 1cm, shiny purple-black when ripe. |
| Flowering: | Nov - Mar |
| Fruiting: | Feb - Jul. |
| Habitat: | Coastal monsoon on stabilized dunes or low lateritic cliffs; monsoon forests associated with permanent freshwater streams in lowland or sandstone country; drier vine-thickets on sandstone hills or rock outcrops in open woodland. |
| Distribution: | Arnhem Land, Alligator Rivers and Darwin Regions, Queensland, Western Australia, New South Wales and Victoria. |

Reference

Native Plants of Northern Australia Author: John Brock, 2001

Description

Language name: **Kuluybirr**

Scientific name: *Scleropages jardinii*

Family: Osteoglosidae

Common name: Saratoga

Size: Up to 100cm, usually about 50 - 70cm

General: The Saratoga comes from an ancient lineage of fish and is related to some of the biggest species of freshwater fish.

Habitat: Floodplains and lowlands. Prefers long deep muddy holes with overhanging vegetation. Saratoga are solitary fish and are very territorial and aggressive to other members of their species.

Diet: An opportunistic carnivore and mainly a surface and mid water feeder like *S.leichardti*, gulf saratoga take a wider variety of other fish and crustaceans as well as terrestrial insects etc

Distribution: North Australia from WA to Western Cape York and into southern Papua New Guinea

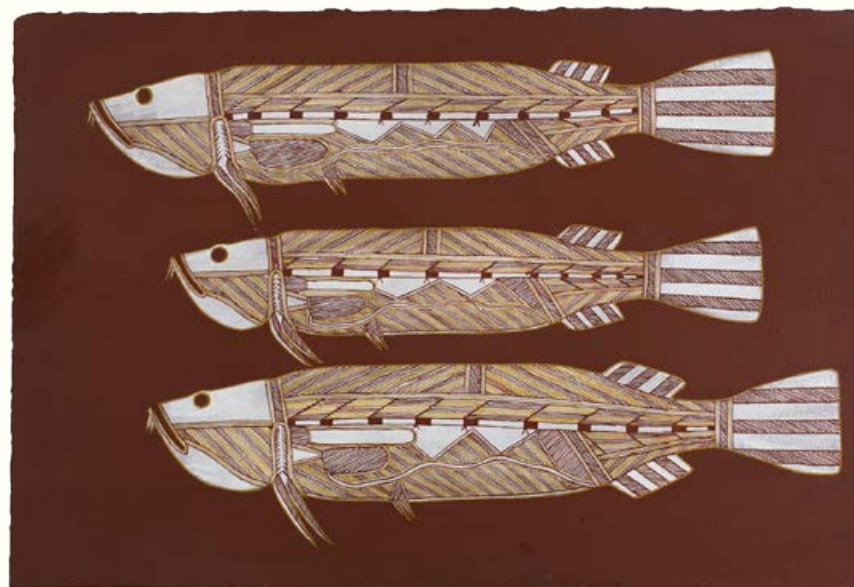
Behaviour: The female produces around 70 to 200 large eggs, about 10 mm in diameter. She takes the fertilised eggs into her mouth and keeps them there until they hatch. During this time, she loses all interest in feeding and spends more time at the surface. Other saratoga appear to ignore the breeding females, putting aside their normal enmity towards other fish.

The eggs hatch about two weeks after fertilisation, the female periodically releases the larval fish near the edges of the pool. She remains nearby and often swims slowly parallel to the bank with the young fish swimming about her head. She recalls the baby fish with a sudden kinking movement of her body, which is followed by the rapid return of the fry to her mouth. This release and recall behaviour continues for the first or three days after the eggs hatch..**

References:

<http://www.environment.gov.au/ssd/publications/special/pubs/fishes-2.pdf>

**<http://www.nativefish.asn.au/>



Allan Nadjamerrek - **Kuluybirr** (Saratoga)

acrylic and ochre on paper, 51 x 76cm

"This is **kuluybirr** (saratoga). I painted this because I like to eat it. I (Allan) like to eat this more than barramundi. I painted three because they live together. You catch it in deep water with a fishing line with worms for bait or with a spear. You can catch it at Gamarrkawan or Manmoyi. You can see the different parts in the painting, **kunkodj** (head), **kunmerllemkanj** (belly), **kunbodmekanj** (back) and **kunberdmedjdjek** (tail)."

Allan Nadjamerrek



Allan Nadjamerrek - **Dunbuhmanj** (Black Bream) and **Burarr** (Water Goanna)
acrylic and ochre on paper, 41 x 61cm

Dunbuhmanj (black bream) and **burarr** (water goanna) live anywhere on the creek but usually next to the rocky country. **Boort** (spangled grunter) is like **dunbuhmanj** but is more white. **Burarr** dives into the water and swims away when they see you so he is hard to catch. You can shoot him with a gun or a spear. **Dunbuhmanj** and **boort** you can catch with a fishing line with buffalo or bird meat for bait. You can catch and eat all of these at anytime of the year. You can cook **burarr** on the coals. **Dunbuhmanj** and **boort** you can cook on the coals or boil it into a soup.

Allan Nadjamerrek

Description

Language name: **Dunbuhmanj**

Scientific name: *Hephaestus fuliginosus*

Family: Terapontidae

Common name: Black Bream, Sooty Grunter

Size: Commonly 250mm and 400g, up to 500mm and 4kg

Habitat: Headwaters and lowland creek channels, rare in the floodplain zone.

Diet: Omnivorous, wide variety of food including shrimp, worms, insects, frogs, algae, plant root, and palm berries

Distribution: East coast of Queensland throughout Cape York and the Gulf of Carpentaria west through Arnhem Land to the Daly River System.

Reference

<http://www.environment.gov.au/ssd/publications/special/pubs/fishes-1.pdf>

Description

Language name: **Mardebulmardebulh**

Scientific name: *Nymphoides minima*

Family: Menyanthaceae

Common name: Water lily

Description: Aquatic herb with long slender stems and floating leaves. Leaves smooth, small, somewhat horseshoe-shaped, deeply 2-lobed at base, blade mostly 1 - 1.8cm x 1 - 1.5cm, whitish bubbly sponge underneath, solitary, terminal on long slender stems. Flowers white with minutely fringed petals and yellow throat about 1cm across, few or several in clusters on very slender short stalks arising from below leaf base. Fruit very small roundish capsules 0.2 - 0.3cm long.

Flowering: Jun- Jul.

Habitat: Sandstone escarpment country in gently flowing water to about 1m deep.

Distribution: Northern Territory, Queensland and Western Australia.

Reference

Native Plants of Northern Australia Author: John Brock, 2001



Namarnyilk (Gavin) Nadjamerrek - **Ngalyod** (Rainbow Serpent)

acrylic and ochre on paper, 51 x 76cm

"**Ngalyod** Dreaming came from a country called Gamarrgawan in the Mann River area. The **mardebulmardebulh** (water lilies) are growing on her back."

Namarnyilk (Gavin) Nadjamerrek

Additional information

Ngalyod (Rainbow Serpent) is a most important ancestor spirit in western Arnhem Land and appears in various manifestations in Kunwinjku mythology. It is believed that as a serpent she tunnels underground using barbed extensions from her head and the bony protuberance from her neck as aids. She is generally feared as she may swallow Aboriginals who break traditional laws. **Ngalyod** dwells also in various billabongs in Arnhem Land. In the Dreamtime **Ngalyod** assumed a range of animal forms, including snake, kangaroo and crocodile and at times transformed her self from one to the other, or into a combination of each.



Namarnyilk (Gavin) Nadjamerrek - **Ngalmangiyi** (long-necked turtle)
acrylic and ochre on paper, 76 x 51cm

Ngalmangiyi (long-necked turtle) is prized by **bininj** (Aboriginal people) for its tasty rich white flesh. It is also sought for its eggs, which are laid in a mud nest hole on the bank of swamps and billabongs. The best times for hunting turtle are the six months after **kudjewk**, the monsoon that occurs at the beginning of the year.

Description

Language name: **Ngalmangiyi**

Scientific name: *Chelodina rugosa*

Common name: Northern Long neck turtle,
Snake neck turtle

Description: A fast-growing, carnivorous turtle that occupies seasonally ephemeral habitats. The turtle mostly feeds nocturnally in the wild, eating a variety of crustaceans, molluscs and fish. Depending on environmental conditions the turtle may undergo periods of dormancy during the dry season. Mating occurs during December and January soon after turtles emerge from dormancy. Nesting season spans some eight months from the late wet season until mid dry season, during which the turtle lays multiple clutches of eggs in underwater nests. Nesting may continue for longer when waterholes dry later following prolonged wet season rains. Females can be easily recognised by the very short, stubby tail.

Habitat: Freshwater swamps, billabongs, waterholes and slow-flowing rivers

Distribution: Lowland regions throughout northern Australia and in southern New Guinea

Reference

http://aerg.canberra.edu.au/reprints/1999_Kennett_reproduction.pdf

http://www.carettochelys.com/macrochelodina/macrochelodina_rugosa.htm

http://en.wikipedia.org/wiki/Chelodina_rugosa

http://espace.library.uq.edu.au/eserv.php?pid=UQ%3A9256&dsID=_Chelonia_rugosa.pdf

Description

Language name: **Kinga**

Scientific name: *Crocodylus porosus*

Common name: Saltwater crocodile

Size: Males can reach weights of over 1000kg

Habitat: Saltwater crocodiles generally spend the tropical wet season in freshwater swamps and rivers moving downstream to estuaries in the dry season and sometimes travelling far out to sea.

Diet: Opportunistic, apex predator capable of taking nearly any animal that enters its territory

Distribution: Suitable habitats from Northern Australia through Southeast Asia to the eastern coast of India.

Reference

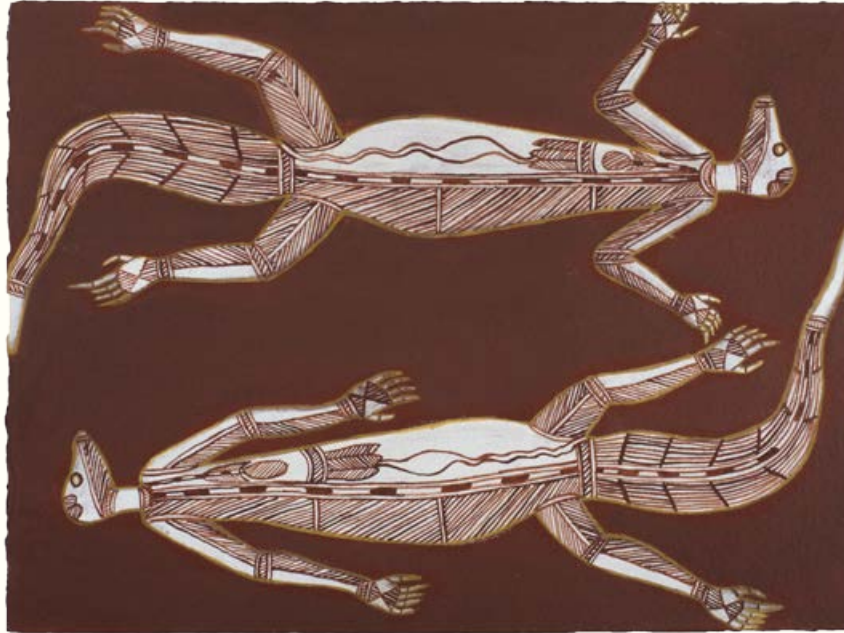
http://en.wikipedia.org/wiki/Saltwater_crocodile



Namarnyilk (Gavin) Nadjamerrek - **Two Brothers and Kinga**

acrylic and ochre on paper, 52 x 76cm

The story came from a country call Marlkawo south of Oenpelli. One brother was married and had a wife and the other brother was single they went out looking for **kinga** (crocodile). They saw crocodile tracks that went into a billabong and the older brother tried to catch the crocodile but he was killed.



Namarnyilk (Gavin) Nadjamerrek - **Burarr** (Mertens' water monitor)
acrylic and ochre on paper, 41 x 61cm

Description

Language name: **Burarr**

Scientific name: *Varanus mertensi*

Family: Varanidae

Common name: Mertens' water monitor

Description: It is a wide-ranging, active foraging, opportunistic predator of aquatic and riparian habitat. It is dark brown to black above, with many cream to yellow spots. The under-parts are paler (white to yellowish) with grey mottling on the throat and blue-grey bars on the chest. The tail is strongly compressed laterally, with a high median dorsal keel, and is about 1.5 times the length of head and body.

Size: Approximate length of about one meter.

Habitat: The monitor is semi-aquatic, a strong swimmer and seldom far from water. It is often seen basking on mid-stream rocks and logs, and on branches overhanging swamps, lagoons and waterways throughout its range. When disturbed it drops into the water where it can stay submerged for long periods

Diet: The monitor feeds both on land and in water, mainly on fish, frogs and carrion, also taking terrestrial vertebrates and insects when available. It has a good sense of smell and may dig up prey when foraging, including the eggs of freshwater turtles

Breeding: The monitor lays eggs in a burrow, usually in the dry season and hatching in the following wet season. The eggs hatch within 200 – 300 days after laying, depending on temperature, with the hatchlings able to enter the water and swim immediately

Distribution: Coastal and inland waters across much of north Australia, from the Kimberley region of WA, across the 'Top End' of the NT and the Gulf Country, to the western side of the Cape York Peninsula in Far North Queensland. Mertens' water monitors are threatened by the spread of cane toads, through poisoning after eating them. They are listed as Vulnerable under Northern Territory legislation.

Reference

http://en.wikipedia.org/wiki/Mertens%27_Water_Monitor

Description

Language name: **Karrbarda**

Scientific name: *Dioscorea transversa*

Family: Dioscoreaceae

Common name: Long yam

Description: Herb with annual twining stems 2 – 4m long. Leaves heart shaped to broad-triangular, usually 5 – 12cm long, 2 – 8cm wide with a pointed tip, surface smooth, petiole 1 – 9cm long. Separate male and female plants. Male plants produce flower spikes 3 – 6cm long, female plants produce flowers 10 – 20cm long. Fruit is a capsule 20 – 30mm long with lobes 15mm wide; seeds are 5mm long with a surrounding wing. Tubers, cylindrical and rarely greater than 10mm diameter, often deep in the soil. Small globular bulbils present in some leaf axils.

Habitat: Moist open forest

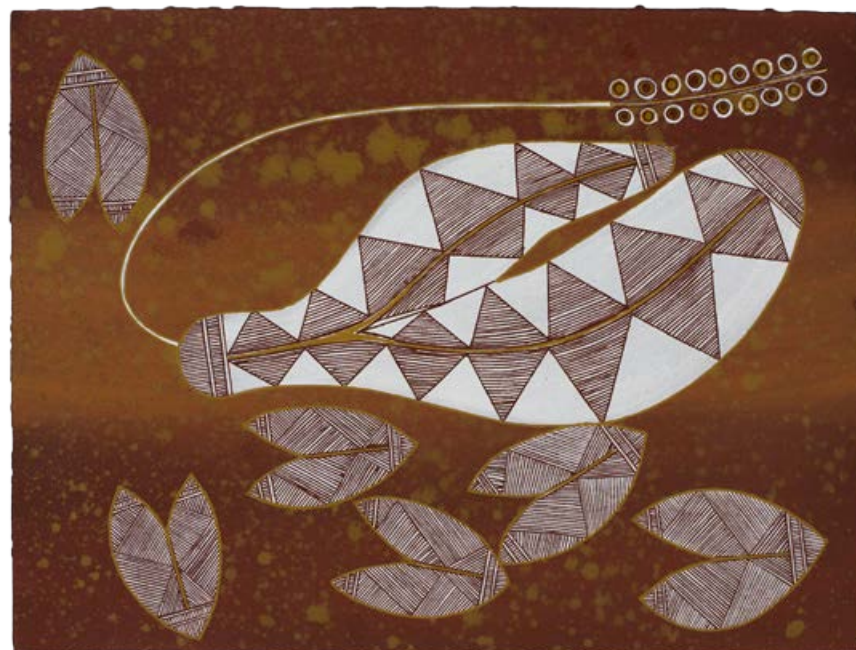
Distribution: Northern Territory, Queensland, Western Australia and New South Wales

Reference

<http://plantnet.rbgsyd.nsw.gov.au/cgi-bin/NSWfl.pl?page=nswfl&lvl=sp&na me=Dioscorea-transversa>

http://www.rbgsyd.nsw.gov.au/education/Resources/bush_foods/Dioscorea_transversa

http://keys.trin.org.au:8080/key-server/data/oeof0504-0103-430d-8004-060d07080d04/media/Html/taxon/Dioscorea_transversa.htm



Maralngurra (Maath) Nadjamerrek - **Karranbada** (Long Yam)
acrylic and ochre on paper, 31 x 44cm

"**Karrbarda** (long yam) sometimes grows in different shapes like in this painting it shows it growing in two pieces. The circle part is the flowers. It is ready to dig when you see the flowers. **Bininj** (Aboriginal people) as well as kangaroos, black rock wallaroo and pigs all dig it up. It tastes like cassava but softer and sweeter."

Maralngurra (Maath) Nadjamerrek



Maralngurra (Maath) Nadjamerrek - **Yawk Yawk** (Freshwater Spirit)
acrylic and ochre on paper, 76.5 x 51cm

Yawk Yawk is the Kunwinjku term used for young women but also for special female water spirits that have fish tails. Sometimes they are described as 'mermaids' and are said to live in trees and in water in special places in western Arnhem Land. They are spirit guardians of a particular waterhole.

Yawk Yawk start out in a tadpole-like form and as they get older they grow fish tails. They spend most of their time in the water but when fully-grown are able to change their tails into legs and walk on land to forage for food. They have **namarnkol** (barramundi) as pets and **Ngalyod** (Rainbow Serpent) serves as their protector. At the end of the wet season **Yawk Yawk** change into dragonflies, which signifies to the **bininj** (Aboriginal people) that the rains have finished.

Description

| | |
|------------------|--|
| Language name: | Namarnkol (large barramundi), malalalk (small barramundi) |
| Scientific name: | <i>Lates calcarifer</i> |
| Family: | Latidae |
| Common name: | Barramundi |
| Size: | Up to 180cm, usually 60 – 70cm |
| Habitat: | Common in floodplain and lowland billabongs, rarer in the headwaters |
| Diet: | Mainly fish and larger crustaceans |
| Distribution: | All large north Australian coastal rivers, tropical Indo-Pacific region from China to the Persian Gulf |
| Breeding: | Catadromous. Barramundi migrate from freshwater to the estuaries after 3 - 5 years. The males change into females 2 - 3 years later when about 70cm in length. |

Reference

<http://www.environment.gov.au/ssd/publications/special/pubs/fishes-2.pdf>

Description

Language name: **Ramberambe**

Scientific name: *Morelia oenpelliensis*

Family: Pythonidae

Common name: Oenpelli rock python, Oenpelli python

Description: Dark olive-brown snake, patterned with darker blotches. The underside is cream to dull yellow.

Size: Average length: 200cm, Maximum length 430cm

Habitat: It shelters in cracks, caves and crevices of rugged broken sandstone escarpments and gorges; or in large shady trees. Within this environment it has been reported from monsoon rainforest patches, riparian areas, woodlands, open heath lands and bare rock pavements.

Diet: Comprises mostly medium to large mammals, particularly possums and macropods.

Distribution: Western Arnhem Land, Northern Territory.

General: The Oenpelli python is rare and is listed as Vulnerable under Northern Territory legislation*. Indigenous ranger groups are currently involved with a project with the Territory Wildlife Park looking into the captive breeding of the Oenpelli python for potential sale to the pet industry**.

Reference

<http://www.arod.com.au/arod/reptilia/Squamata/Boidae/Morelia/oenpelliensis>

*http://www.nretas.nt.gov.au/__data/assets/pdf_file/0017/10880/oenpelli_python_vu.pdf

**<http://www.bawinanga.com/bac-enterprises/djelk-wildlife-enterprises>



Maralngurra (Maath) Nadjamerrek - **Ngurrudu** (Emu)

acrylic and ochre on paper, 76.5 x 51cm

"I did this painting because of a story that the 'Old Man' (Bardayal) told me about **ngurrudu** (emu) and **ramberambe** (rock python). We were walking in the bush one day and saw a dead emu and that old man told me not to go next to that **ngurrudu** because that **ramberambe** goes inside that **ngurrudu** and eats that heart. If you go too close that **ramberambe** might come out and bite you then **boinj** (finished). That **ramberambe** is usually skinny but I drew it big. We don't eat that **ramberambe** but that **ngurrudu** is very important. When you cook it up there is a proper way that the old people know of how to share that meat between all the **kunnguya** (clans)."

Maralngurra (Maath) Nadjamerrek



Maralngurra (Maath) Nadjamerrek - **Wakewaken** (Sugar Bag Spirit)
acrylic and ochre on paper, 76.5 x 51cm

"The story of **Wakewaken** (Sugar-bag woman) came from a country near Mann River a place call Gamarrkawan. The tree in the painting is called **mandjarduk** (red apple)."

Maralngurra (Maath) Nadjamerrek

These **Wakewaken** originally lived under a paper bark tree in a creek of cold running water. **Ngalyod** (the Rainbow Serpent) is said to reside in this same place. One day the **Wakewaken** left their underwater home and moved around the country gathering bush fruit, which they placed in the **burlbe** (dilly bags) they carried. **Wak**, (black crow) saw this and became angry. Thinking they were stealing from his country he took a stone axe and cut them in half. They transformed into **mankung** (sugarbag, the honey of native bees) and left their imprint as a rock painting in the artist's **Mankung Djang** (Sugarbag Dreaming) country.

In earlier days when Aboriginal people from this region wanted to ensure that sugar bag would be plentiful each year, they would swim in the creek and pull up the water weeds near the base of the paper bark tree where the **Wakewaken** resided.

Description

Language name: **Mandjarduk**

Scientific name: *Syzygium suborbiculare*

Family: Myrtaceae

Common name: Red bush apple

Description: Tree 8-12m high with rounded crown. Bark tight, slightly rough, dark grey-brown. Leaves opposite, smooth, thick, leathery, broad, oval to nearly circular, blade 7.2 - 19cm x 4 - 13cm, glossy dark green above, paler underneath, fine distinct venation, oil dots, short pointed. Flowers large, white with numerous stamen about 3 - 5cm x 2.5 - 3cm, carried in dense terminal clusters. Fruit flattened-globular, fleshy, prominently ribbed, 3 - 7cm x 3.5 - 9cm, persistent calyx at tip, red when ripe, enclosing single large seed about 3.5 - 5cm diameter.

Flowering: Jul - Oct. Fruiting: Oct - Feb.

Habitat: Common under storey tree in open forest and woodland on well drained soils.

Distribution: Arnhem Land, Alligator Rivers, Darwin, Katherine regions. Queensland, Western Australia and Papua New Guinea.

Reference

Native Plants of Northern Australia Author: John Brock, 2001

This catalogue is in honour and acknowledgement
of the Kunwinjku people of Western Arnhem Land

**DARWIN
FESTIVAL
2012**

Proudly sponsored by
**Northern Territory
Government**

 An Australian Government Initiative

 **national science week**

Artists

Kalarriya (Jimmy) Namarnyilk (dec)

Nakadilinj (Don) Namundja

Allan Nadjamerrek

Maralngurra (Maath) Nadjamerrek

Namarnyilk (Gavin) Nadjamerrek

Ray Nadjamerrek

Project Team

Lois Nadjamerrek – Cultural Custodian and Community Leader

Andrew Managku – Vice President Injalak Arts and Culture and Linguist

Kodjok Namarnyilk – Senior Law-man and Artist

Lorna Martin – Director Injalak Arts and Crafts

Angus Cameron – Director of Nomad Art Productions

Maryke Stagg – Curatorial Assistant and Arts Administrator - Injalak Arts

Alex Debono – Mentor and cultural researcher

Project funding

This project has been assisted by the Northern Territory Government through
the Department of Natural Resources, Environment and the Arts.

Credits

Published by Injalak Arts in conjunction with Nomad Art Productions © 2012

Editing by Angus Cameron, Lorna Martin and Alex Debono

Cultural Research and biological content Alex Debono

Design and artwork photography by Peter Eve, Monsoon Studio, Darwin (printed in Australia)

Cover image – Namarnyilk (Gavin) Nadjamerrek, Ngarrbek (Echidna), acrylic and ochre on paper, 49 x 76cm



Kodjok Namarnyilk

Circa 1940 – 23 June 2012
Language: Kunwinjku
Clan: Wurrban
Sub-section: Nawamud (Kodjok)
Country: Gamargowan, Manmoyi, western Arnhem Land
NT Spring Peake (Kakadu), Nabarung

Kodjok was born around 1940 at Kukadjdjerre in the stone country of western Arnhem Land. As a child Kodjok camped with his family in the sandstone shelters of his clan estate and at Injalak Hill, which is situated across the lagoon from Injalak Art Centre. As a young man Kodjok contracted leprosy that affected his hands and feet.

He is a member of the Wurrban clan whose estate is situated in the upper reaches of the Cadell River. Kodjok was raised by 'Nipper' Kapiirigi, a Gundjeihmi man of the Badmardi clan whose traditional estate was far to the west in the Deaf Adder Creek Valley, now a restricted part of the Kakadu National Park. Kodjok accompanied Kapiirigi when he was engaged in various jobs and took part in social and ritual obligations throughout the Alligator River and Pine Creek-Katherine region.

After the Second World War, Kodjok and Kapiirigi worked alongside Billy Miargu, 'Old' Nabandjole and George Namingum shooting buffalo in the Nourlangie, Deaf Adder Creek and Jim Jim area for Tom Cole.

Due to his association and travels to many parts of the great Arnhem plateau, Kodjok had a sound knowledge of clan territories, sites of significance and associated traditions. Kodjok used to reside at various outstations according to season, family and ritual obligation. They include Manmoyi or Gamargowan on the Mann River in west Arnhem Land and Spring Peake in Kakadu National Park.

Kodjok was considered one of the most important **Djungkay** (ceremonial leaders) in western Arnhem Land and no major ritual could occur without his participation and advice. As Djungkay he conducted hundreds of youths into regional initiation ceremonies, which constitute the major rites of passage for Indigenous men.

Kodjok displayed a great energy and zest for living and art and created paintings of great strength and deep spirituality late into his life. Bold vigorous marks were a hallmark of his paintings, unique amongst stone country artists. Kodjok has been included in numerous survey exhibitions and is represented in public and private collections nationally. In 1982 one of Kodjok's images was used on the Australian 65c stamp.

As a peer of the late Bardayal Nadjamerrek AO (dec), Kodjok painted alongside him on the Mok Clan estate and also assisted Bardayal in surveys and mapping of clan estates. Kodjok was regularly sought after by anthropologists, linguists and ecologists and worked extensively with Kakadu National Parks up until his death.

Kodjok Namarnyilk passed away at the Darwin Hospital surrounded by friends and family in June 2012.

Collections: Art Gallery of South Australia, Adelaide
Museum of Contemporary Art, Sydney
National Gallery of Victoria, Melbourne

Don Nakadilinj Namundja

Date of Birth: 1954
Language: Kunwinjku
Clan: Kardbam
Country: Mankalord, Gunbalanya, western
Arnhem Land, NT

Nakadilinj lives in Gunbalanya (Oenpelli) in western Arnhem Land. He has land in the King River area just east of Gunbalanya. His name (Nakadilinj) is made of the male prefix Na and the name kadilinj, for a sacred place of water at Mankorlod.

In the past he would regularly travel to Kapalwarnmyo on the upper reaches of the Mann River to sit down and paint with the late Bardayal Nadjamerrek AO (dec) at his outstation.

Nakadilinj's family style of painting belongs to the same school as the Nadjamerrek family, the foundation of which resides within the rock art of the region.

Nakadilinj's work is direct and simple in contrast to the dynamic style of his peers. His paintings focus on essential shapes and arrangements of plants animals and ritual objects that have relationships with the natural and spiritual world. His paintings identify the ancestors, animals and plants found at his birthplace at Mankorlod. Objects seem to hover above the red ochre ground as if floating in air or water.

Nakadilinj is also well known for his vibrant etchings and in 2011 he began to use a medium new to him, screenprinting. The graphical qualities of his images are well suited to textiles as a substrate.

Nakadilinj's first exhibited at Raft Art Space in Darwin 2004 met with immediate acclaim. The freshness of Nakadilinj's paintings prompted the National Gallery of Australia to acquire two works from the exhibition. He was selected for the prestigious National Aboriginal and Torres Strait Islander Art Awards in Darwin in 2003, 2005 and 2006.

Nakadilinj attends to the needs of the many researchers, archeologists, and academics. He often travels on senior ceremonial business now lives at Oenpelli and works at Injalak Arts Centre.

Allan Nadjamerrek

Date of Birth: 1986
Language: Kunwinjku
Clan: Mok
Country: Kabulwarnamyo Outstation &
Gunbalanya Community, western
Arnhem Land NT, Australia

Allan was born in 1986. As a child Allan suffered from chronic ear infections leaving him profoundly deaf for much of his adolescent life. After being told he would be remain 90% deaf, he was sent to Melbourne in 2005 for innovative surgery, which restored much of his hearing in both ears. On hearing the stories of his late uncle, Bardayal Nadjamerrek AO, Allan commenced painting in earnest. Allan's style is reminiscent of his uncle's. He utilises the single line rarrk that adorns the rocky caverns and galleries of the 'Stone Country' region.

Allan is also a part time ranger with the Warrdeken Land Management Group, which was formed to assist in the protection and management of the western Arnhem Land environment, combining traditional ecological knowledge with western science. Today Warddeken Land Management operates out of Kabulwarnamyo and has several rangers working in its programs, including weed and feral animal control and traditional fire management.

In 2011 Allan took part in an intensive five-day professional development program at the Museum of Contemporary Art (MCA) in Sydney during the opening week of the exhibition Bardayal Nadjamerrek AO (dec). He also participated in a commission by the MCA to paint a large-scale mural as part of his uncle's landmark exhibition.

Allan is also part of the screenprint design team at Injalak Arts producing screenprinted fabrics as part of the 2011 fabric collection.

Namarnyilk (Gavin) Nadjamerrek

Date of Birth: 1987
Language: Kunwinjku
Clan: Bularlhdja
Country: Kabulwarnamyo Outstation &
Gunbalanya Community, western
Arnhem Land NT, Australia

Gavin has been painting at Injalak Arts since 2006. His style is reminiscent of his grandfather, Bardayal Nadjamerrek AO. Like his grandfather, Gavin utilises the single line rarrk that has adorns the rocky caverns and galleries of the region.

Gavin is a ranger with the Warrdeken Land Management, which operates out of Kabulwarnamyo. As a ranger Gavin is responsible for fire management, feral plant and animal control and a range of environmental programs.

As an artist Gavin has participated in regular group exhibitions at Mossesson Galleries in Melbourne from 2007. In 2011 he created a wall painting with Allan Nadjamerrek, Ray Nadjamerrek, Maath Maralngurra and Lorraine White at the Museum of Contemporary Art in Sydney to celebrate his late grandfather's exhibition Bardayal Nadjamerrek AO.

Maralngurra (Maath) Nadjamerrek

Date of Birth: 1986
Language: Kunwinjku
Clan: Ngalingbali
Country: Kudjekbinj, Gumaderr, western
Arnhem Land, NT

Maath was born in 1986. As a young man Maath has been involved in the Warrdeken Ranger group which plays an integral role in the management of country in western Arnhem Land by controlling invasive animal and plant species and wildfires which pose significant risk to the environment.

In 2009 he was part of a group exhibition titled 30 Under 30: A New Generation of Indigenous Art at Indigenart in Melbourne and Subiaco. In December 2010 he was commissioned to paint a wall painting for Museum of Contemporary Art in Sydney as part of exhibition Bardayal Nadjamerrek AO (along with other members of his family)

Maath is known for his paintings of Mimi spirits, Ngalyod (Rainbow Serpent), Borlokko (water python), Namarnkol (Barramundi), Wakewaken (Sugarbag woman), Yawk Yawk (freshwater mermaid) and Karrabarrda (Long yam) amongst other subjects.

He currently lives in Gunbalanya and works at the local pastoral property owned by the Indigenous Land Corporation and paints through Injalak Arts and Crafts.

For your information:
This album is a collection of
black and white photographs of
the artist's work, taken at an
exhibition in New York City.
The photographs are arranged
in a chronological order, from
the earliest to the latest. The
album is a valuable reference
for anyone interested in the
artist's work.

Artist: Alfred Stieglitz
Language: English
Date: 1903-1917
Medium: Photograph
Number: 100
Call No.: DA 1171 v1
Price: \$1.00



2