

Nomad Art in conjunction with Merrepen Arts present

# KIDIN - TIME OF PLENTY



Kieren Karripul, *Kala Damuy - Red Root*, etching with soft ground red root, 24.5 x 32 cm, 2016.



Australian Government



Merrepen Arts, Culture & Language  
Aboriginal Corporation



## ***Kidin - time of plenty after the wet season has past. A full year, a full calendar cycle.***

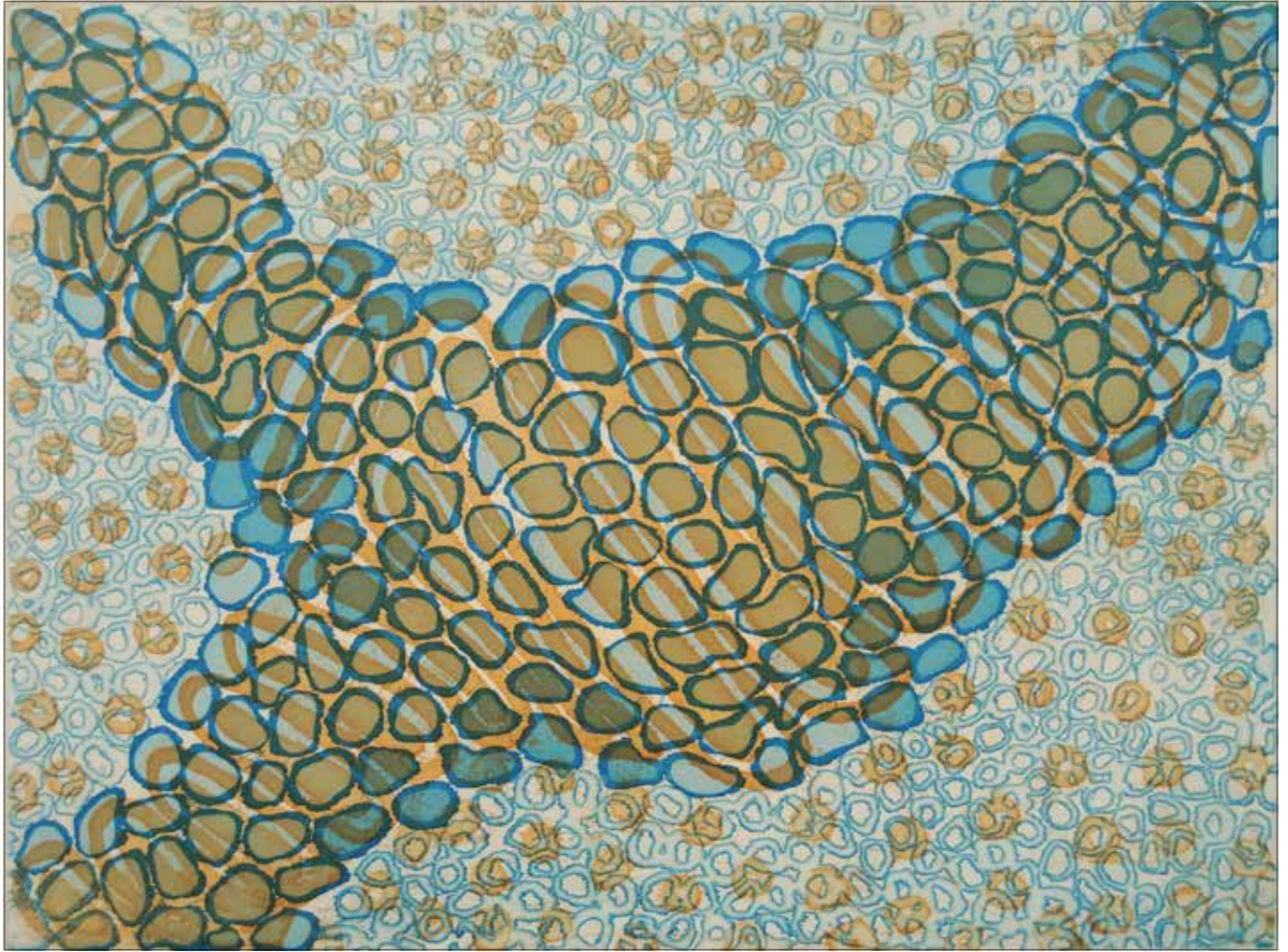
In March 2016 master print maker Basil Hall facilitated an etching workshop at Merrepen Art Centre. Ten artists participated in the workshop, they include:

Patricia Marrfurra McTaggart AM  
Christina Yambeing  
Aaron McTaggart  
Kieren Karritpul  
Margaret Gilbert  
Marita Sambono  
Louise Pandella  
Gracie Kumbi  
Troy Madigan  
Philip Wilson

Merrepen artists are renowned for their colourful and striking depictions of and fauna in prints, paintings and fabrics. The etchings reveal an intimate understanding of the natural environment as well as personal associations and histories.







Aaron McTaggart, *Awarrapun - Crocodile Design*, two plate etching, 24.5 x 32 cm, 2016, \$375 unframed.



Kieren Karritpul, *Walipan – Fish Trap*, two plate etching, 24.5 x 32 cm, 2016, \$400 unframed.



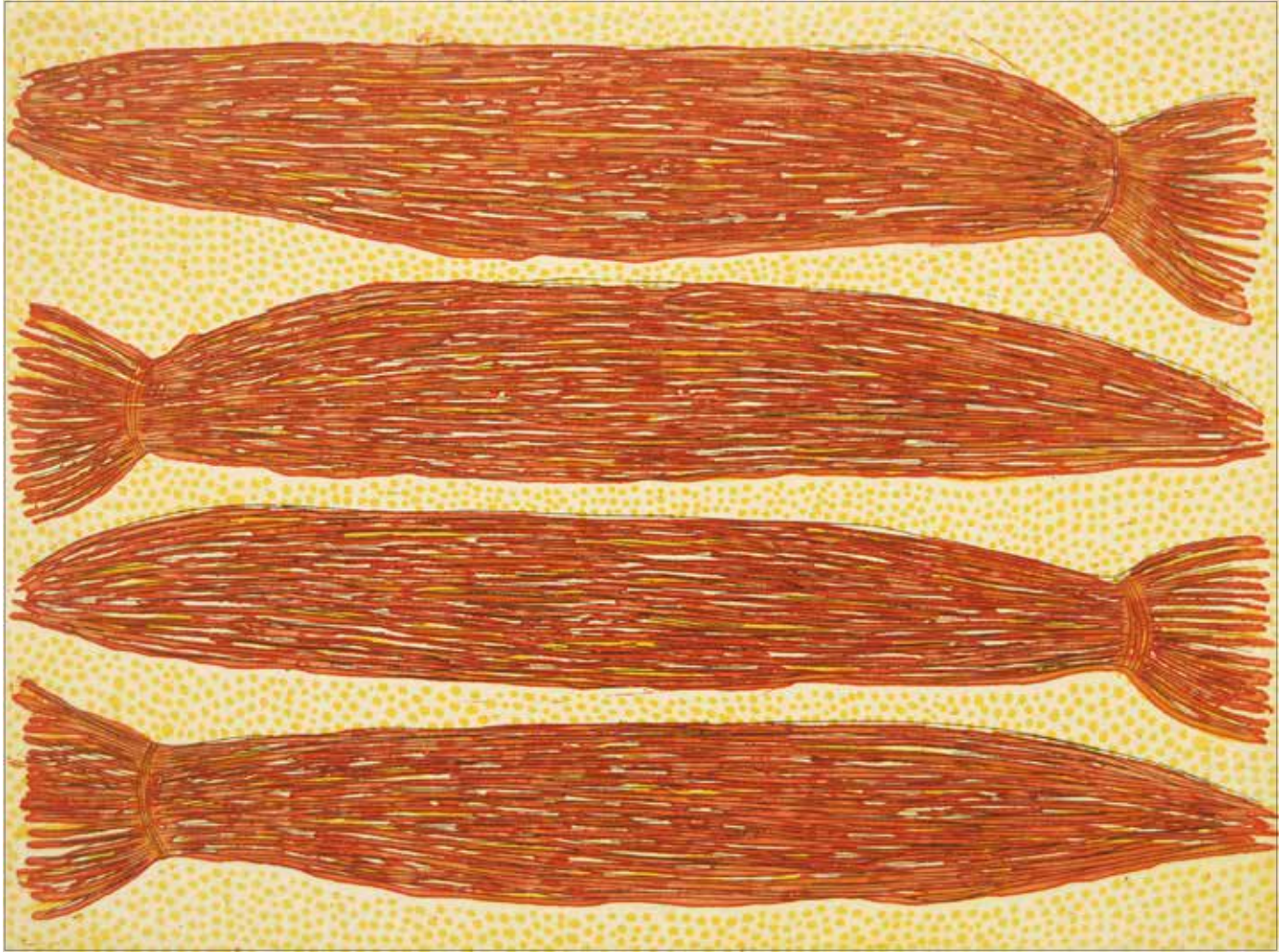


Kieren Karripul, *Kala Damuy - Red Root*, etching with soft ground red root, 24.5 x 32 cm, 2016, \$375 unframed.

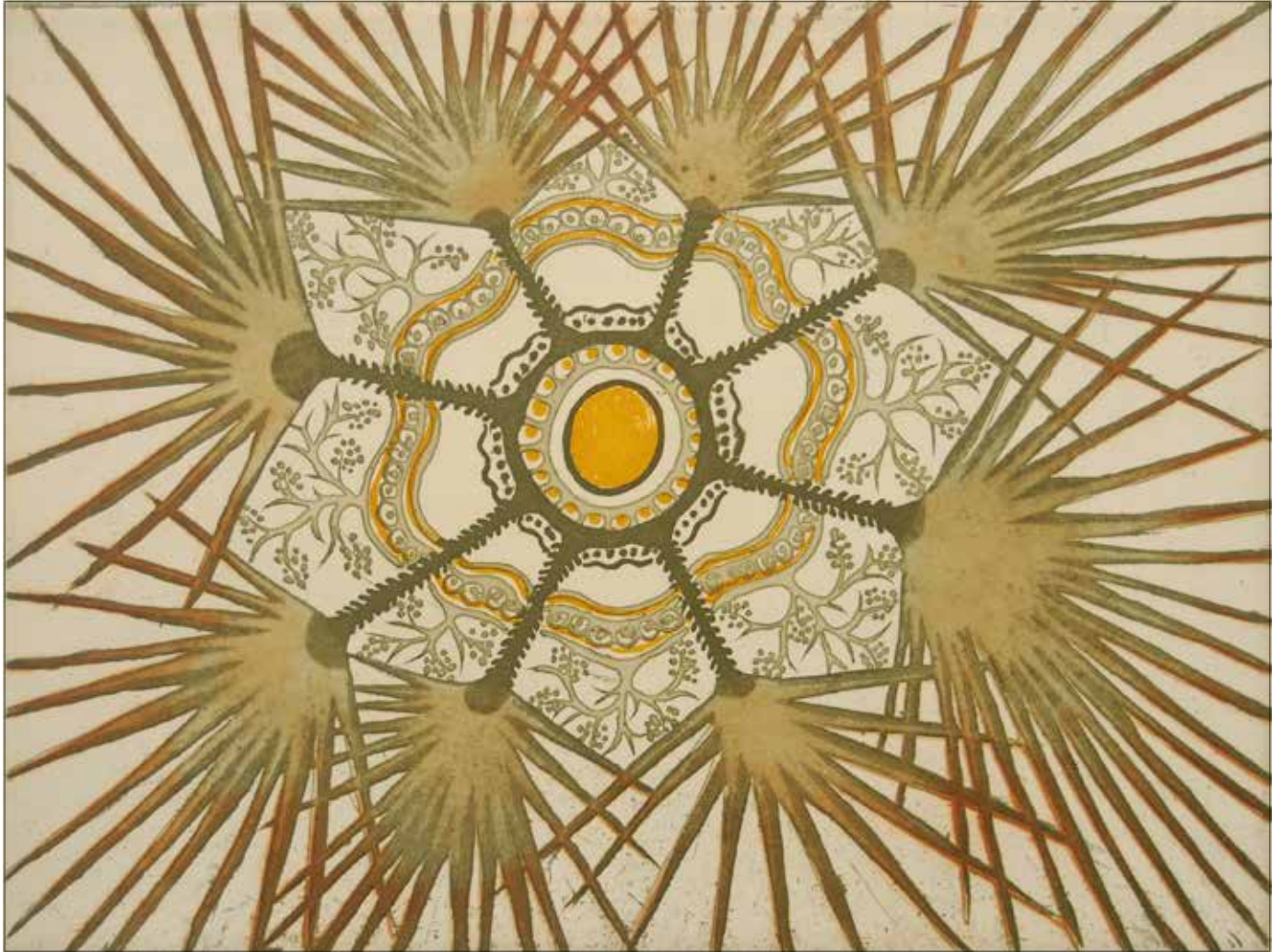


Kieren Karritpul, *Amembirr - Child Spirit (Mother Grandfather Story)*, etching with soft ground merrepen twine, 24.5 x 32 cm, 2016, \$375 unframed.



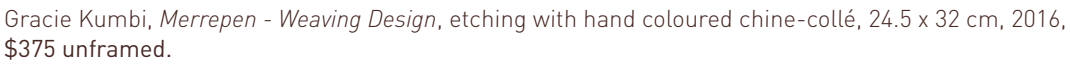


Kieren Karritpul, *Yerrgi - Pandanus Bundles*, three plate etching, 24.5 x 32 cm, 2016, \$400 unframed.



Gracie Kumbi, *Merrepn - Sand Palm*, two plate etching, 24.5 x 32 cm, 2016, \$375 unframed.





Gracie Kumbi, *Merrepen - Weaving Design*, etching with hand coloured chine-collé, 24.5 x 32 cm, 2016, \$375 unframed.





Gracie Kumbi, *Anganfepinimbi and Anganifinyi - Olive Python and Echidna*, two plate etching, 24.5 x 32 cm, 2016, \$375 unframed.





Louise Pandella, *Minimindi - Waterlilies*, etching, 24.5 x 32 cm, 2016, \$375 unframed.



Margaret Gilbert, *Penembe - Freshwater Mussels*, etching with chine-collé, 24.5 x 32 cm, 2016, \$375 unframed.



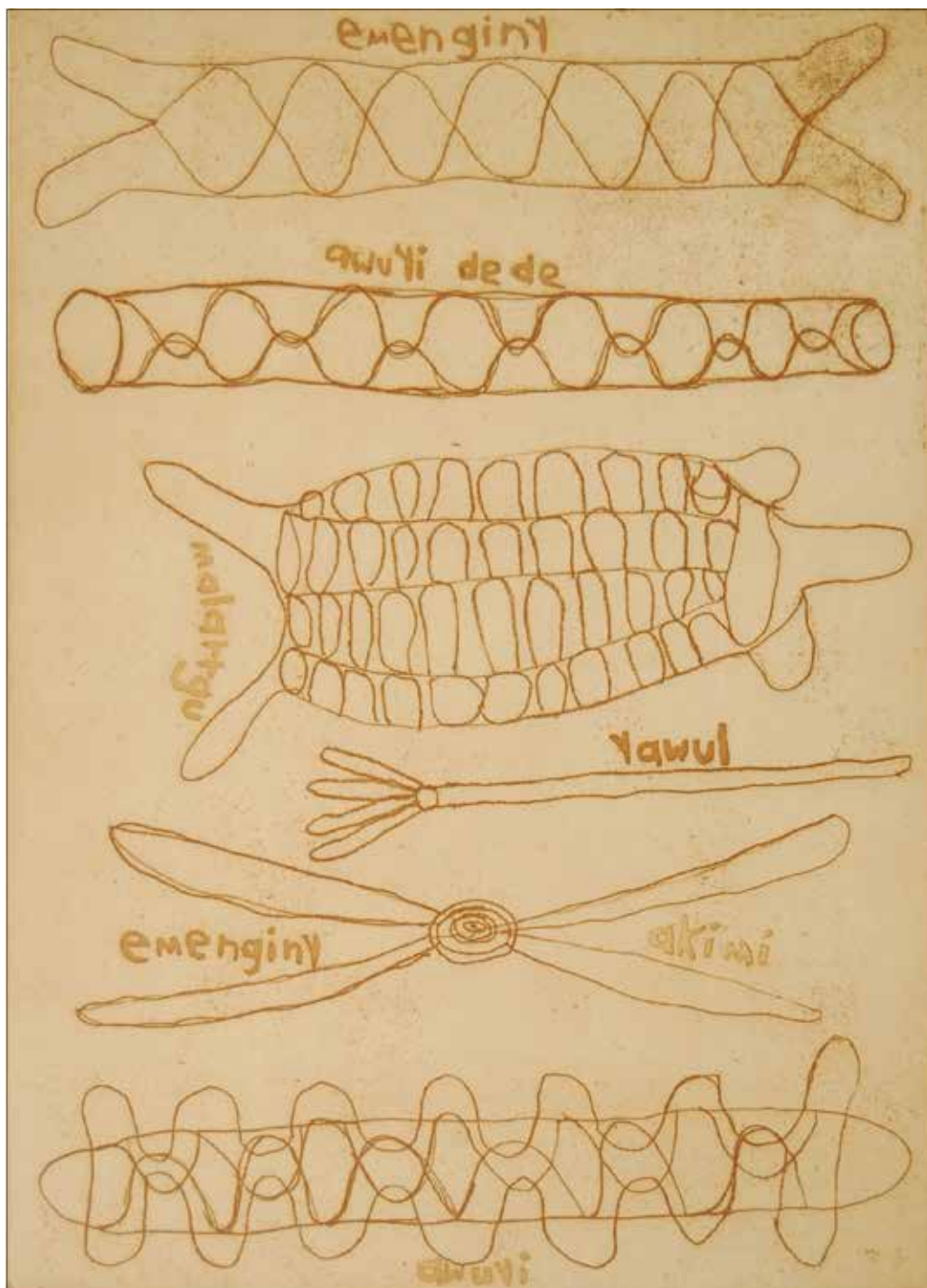


Margaret Gilbert, *Miwulngini - Red Lotus Lily*, etching with soft ground lily leaf, 32 x 24.5 cm, 2016, \$375 unframed.



Marita Sambono, *Kuderra - Billabong*, two plate etching, 24.5 x 32 cm, 2016, \$375 unframed.





Patricia Marrfurra McTaggart AM, *Cats Cradle*, etching with chine-collé, 32 x 24.5 cm, 2016, \$375 unframed.



Troy Madigan, *Yerrwire - Woolybutt Flower*, four plate etching with screen print over lay, 25 x 32 cm, 2016, \$375 unframed.





Troy Madigan, *Minimindi - Waterlilies*, four plate etching, 24.5 x 32 cm, 2016, \$375 unframed.



Troy Madigan, *Merrepn - Weaving Design*, etching with hand coloured chine-collé, 24.5 x 32 cm, 2016, \$375 unframed.





Christina Yambeing, *Miwulngini - Red Lotus Lily*, two plate etching, 24.5 x 32 cm, 24.5 x 32 cm, 2016, \$375 unframed.



Philip Wilson, *Miwulngini - Red Lotus Lily*, two plate etching, 24.5 x 32 cm, 2016, \$375 unframed.



*Kidin – Time of Plenty* combines both art and cultural knowledge with the rich natural heritage of the *Ngan'gikurrungurr* and *Ngen'giwumirri* (*Ngan'gi*) people of the Daly River region. The collection of images is a study of the relationships between plants and animals and *Ngan'gi* people who are intimately connected with their country.

In March 2016 Merrepen artists participated in an innovative etching project with master print maker Basil Hall. The outcome is a collection of 20 beautiful images celebrating the biological diversity and cultural associations of the Daly River Region.

The title *Kidin* (meaning the abundance of life after the wet season) is symbolic of life and nature of the tropical north of Australia. The collection of colour plate etchings creates a highly innovative and unique portrayal of both the environment and the traditional knowledge of the *Ngan'gi* people with an emphasis on traditional language and association with plants and animals.

The knowledge artists have applied to their artwork is the knowledge traditionally used for hunting, gathering, traveling and implement making. Now this knowledge has a new and innovative economic value. The principle of *Kidin* is to explore and celebrate art as a tool

for exchange. The project is about passing knowledge from one generation to the next and importantly from one culture to another, a process that culminates in the building of shared wisdom and increased intercultural understanding.

### The Art Centre

Naiyu, the home of Merrepen Arts, is an Aboriginal community located on the Daly River, surrounded by hills, spectacular wetlands and billabongs. There is an abundant supply of bush-tucker including barramundi, which sees keen fishermen flock to the region during dry season.

The art centre in Naiyu was originally established as a Women's Centre in 1986 with Merrepen Arts, Language and Culture Aboriginal Corporation founded in 1992. The name *Merrepen* (*Livistonia Palm*) was chosen in recognition of the founding women and the natural material they would use to weave fish traps, mats, dilly bags and baskets; a practice that continues today.

Since the inception of the art centre artists have worked across a range of mediums including acrylic paint on canvas, etching and printmaking, cast glass, silk batik and of course, the hand screen printed textiles for which they have since become renowned.





Keiren Karitpul working on his etching plate *Walipan – Fish trap*



*Merrepen* (Sand palm) after which the art centre is named





Aaron McTaggart working on his etching plate



Gracie Kumbi



Master printer Basil Hall at the press



Etching the plate in acid



Kieren Karritpul

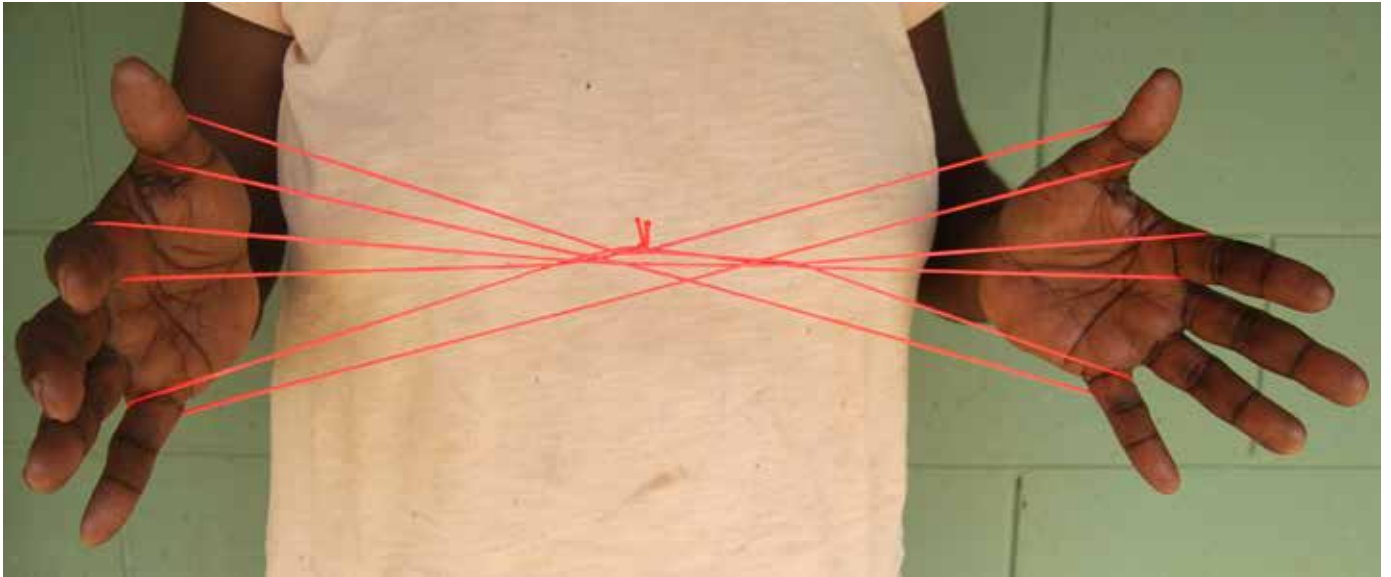


Inking the etching plate for the first proof



Gracie Kumbi's Olive Python and Echidna etching plate





Patricia Marfurra McTaggart AM with her cats cradle



Billabongs and wetlands are an important food source



The mighty Daly River in full flow



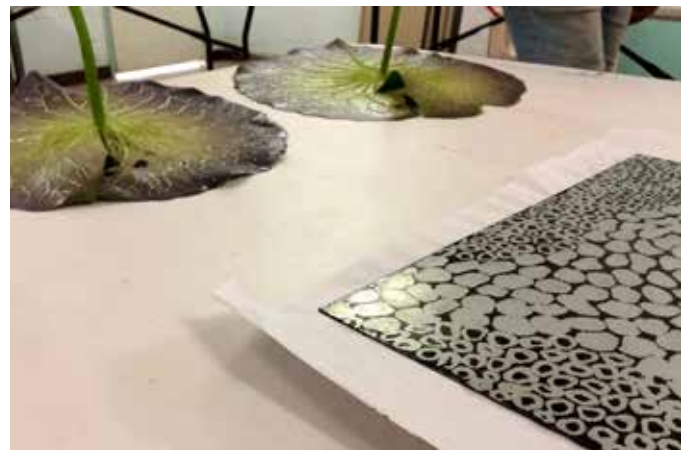
Naiyu flooded in December 2015 and was evacuated



Merrepen or Sand palm (*Livistonia Palm*)



Wurrmuy or Speargrass (*sorghum intrans*)



Lily leaves and etching plate





Basil Hall proofing Troy's etching



Margaret Gilbert working on *Penembe* - Freshwater Mussels



Basil Hall, Philip Wilson and Kieren Karritpul looking at a proof



Troy Madigan's *Minimindi* proof coming off the press



Kieren Karritpul's *Kala Damuy* - Red Root plate



Kieren Karritpul's *Kala Damuy* - Red Root print proof





Patricia Marfurra McTaggart AM



Kieren Karritpul etching his plate



Louise Pandella



Marita Sambono



Philip Wilson



Aaron McTaggart preparing a lily leaf for soft ground etching



Troy Madigan



Christina Yambeing