

Shining Light: prints by leading contemporary Indigenous artists from the Nomad Art Collection

Curated by Talitha Kennedy

A survey exhibition of limited edition prints by artists from remote Australia.
Featuring works by:

Nyapanyapa Yunupingu
Janangoo Butcher Cherel (dec)
Pedro Wonaeamirri
Elizabeth Nyumi (dec)
Bardayal Nadjamerrek (dec)
Dorothy Napangardi (dec)
Ronnie Tjampitjinpa

Selected from Nomad Art's comprehensive catalogue of limited-edition prints, this exhibition celebrates the strength and diversity of art from the Top End, Kimberley and Central Australia through etchings, screen prints, linocuts and lithographs.

'Printmaking has been the ignition for many leading Indigenous artists who headline contemporary biennales and win major art awards. Works by these artists have energised the contemporary art scene with powerful creations that roar with deep culture and gift us an experience of country. In light of recent grand scale installations and immersive media works grabbing attention in the big exhibitions and events, I want to draw attention to the intimacy of prints on paper'.

Talitha Kennedy 2020

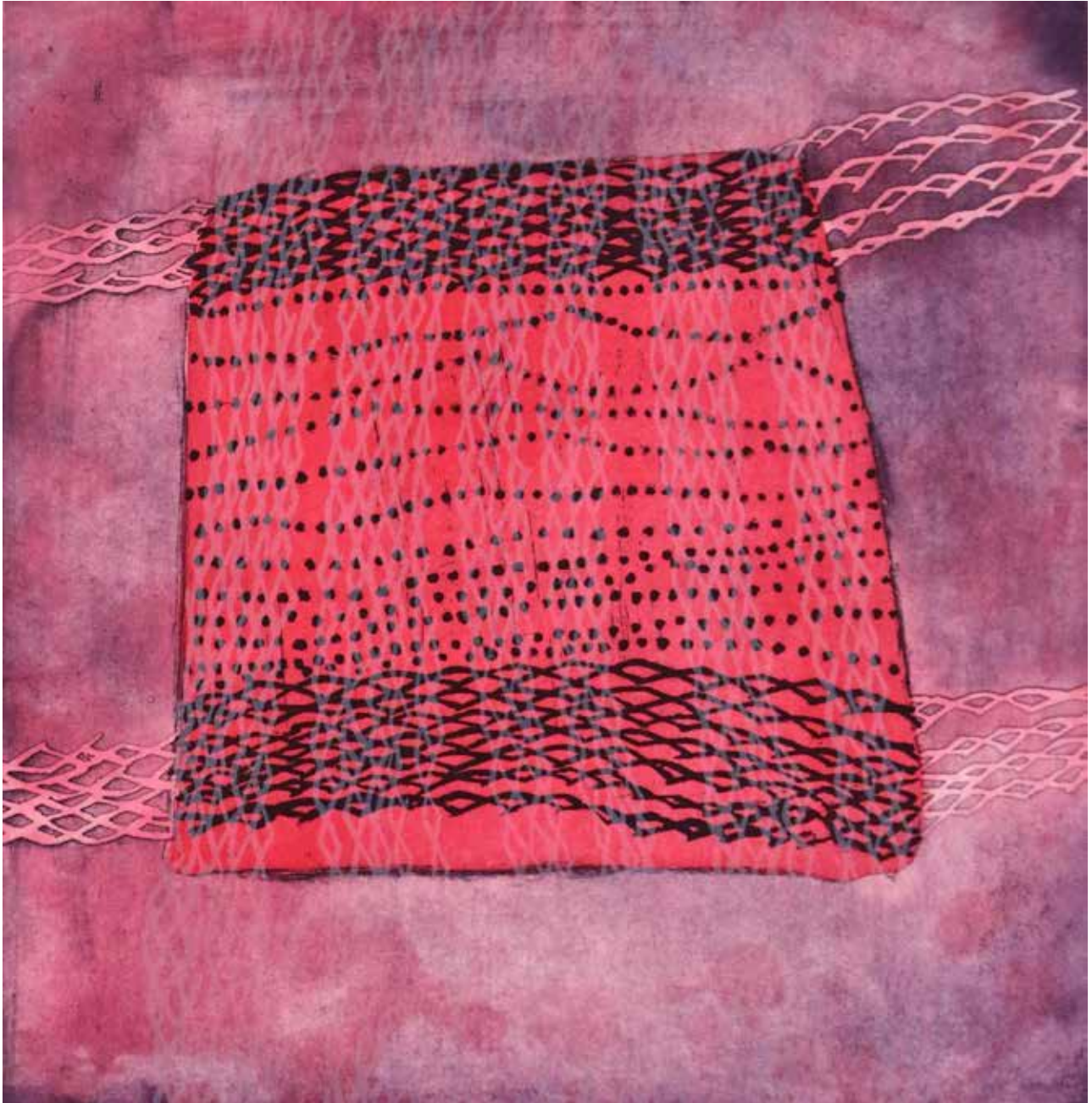
[See curatorial statement on last page](#)





Pink Lines

Nyapanyapa Yunupingu, Buku-Larrnggay Mulka, linocut, editioned at Yirrkala Print Space 2016, 28 x 48 cm,
PRICE (\$AUD): \$275



Lightning ga Gurtha

Nongirnga Marawili, Buku-Larrnggay Mulka, etching and silkscreen, edited by Basil Hall Editions 2018, 49 x 50 cm,
PRICE (\$AUD): \$385



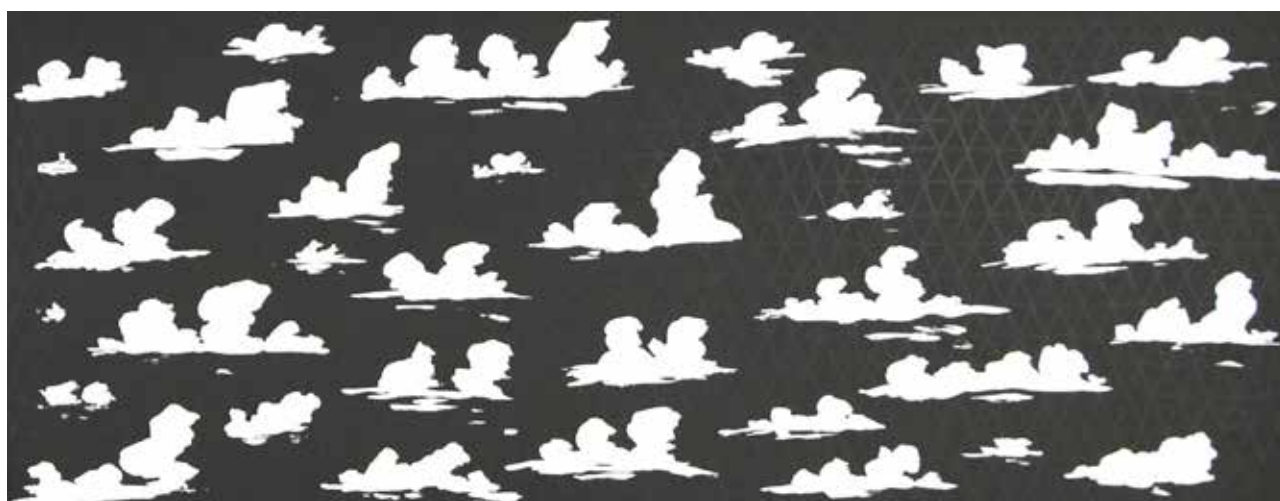
[Latjin](#)

Mulkun Wirrpanda, Buku-Larrnggay Mulka, linocut, edited by Yirrkala Print Space 2019, 38 x 34 cm,
PRICE (\$AUD): \$330



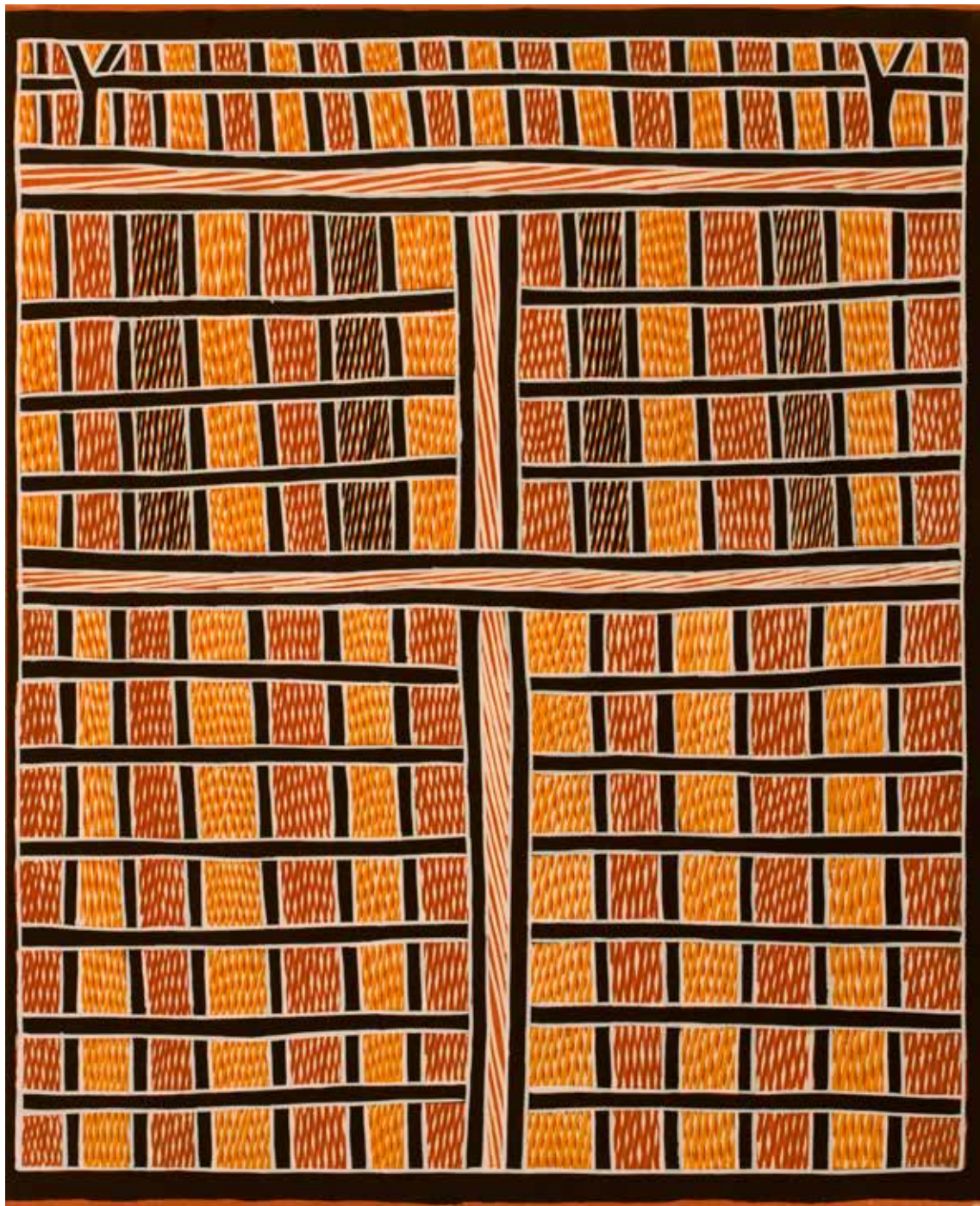
[Baru at Garrangali](#)

Djambawa Marawili, Buku-Larrnggay Mulka, woodblock, edited by Northern Editions 2004, 19.5 x 29.5 cm,
PRICE (\$AUD): \$195



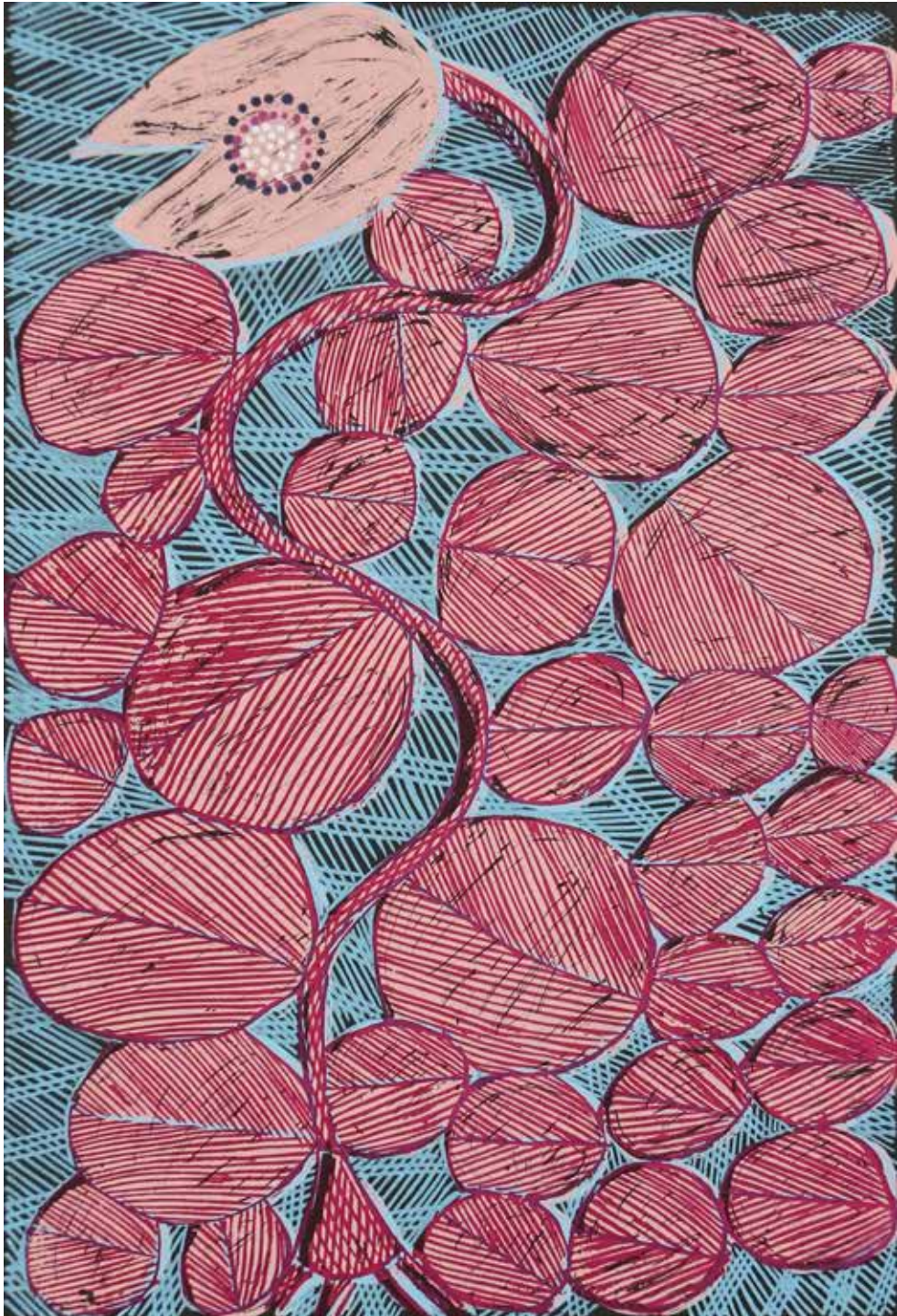
[Wangupini](#)

Nawurapu Wunungmurra (dec), Buku-Larrnggay Mulka, silkscreen, editioned by Basil Hall Editions 2018, 29 x 77 cm,
PRICE (\$AUD): \$385



Dhangì

Marrnyula Mununggurr, Buku-Larrnggay Mulka, etching and silkscreen, edited by Basil Hall Editions 2010, 50 x 62 cm,
PRICE (\$AUD): \$770



Dhatum

Malaluba Gamana, Buku-Larrnggay Mulka, silk-screen editioned at Yirrkala Print Space 2018, 50 x 34,
PRICE (\$AUD): \$385



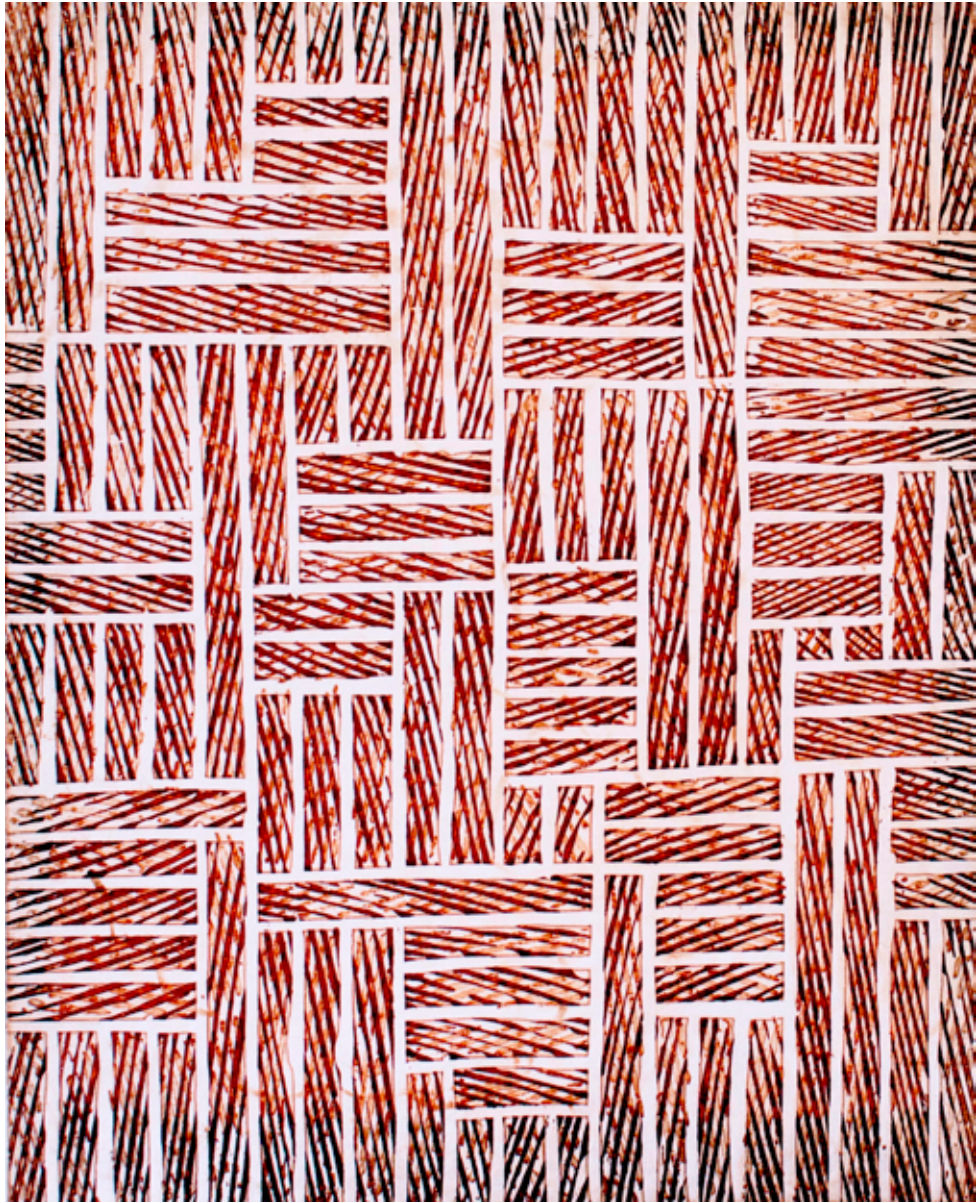
Marrang

Garawan Wanambi, Buku-Larrnggay Mulka,, etching, editioned at Yirrkala Print Space 2015, 40 x 40 cm,
PRICE (\$AUD): \$330



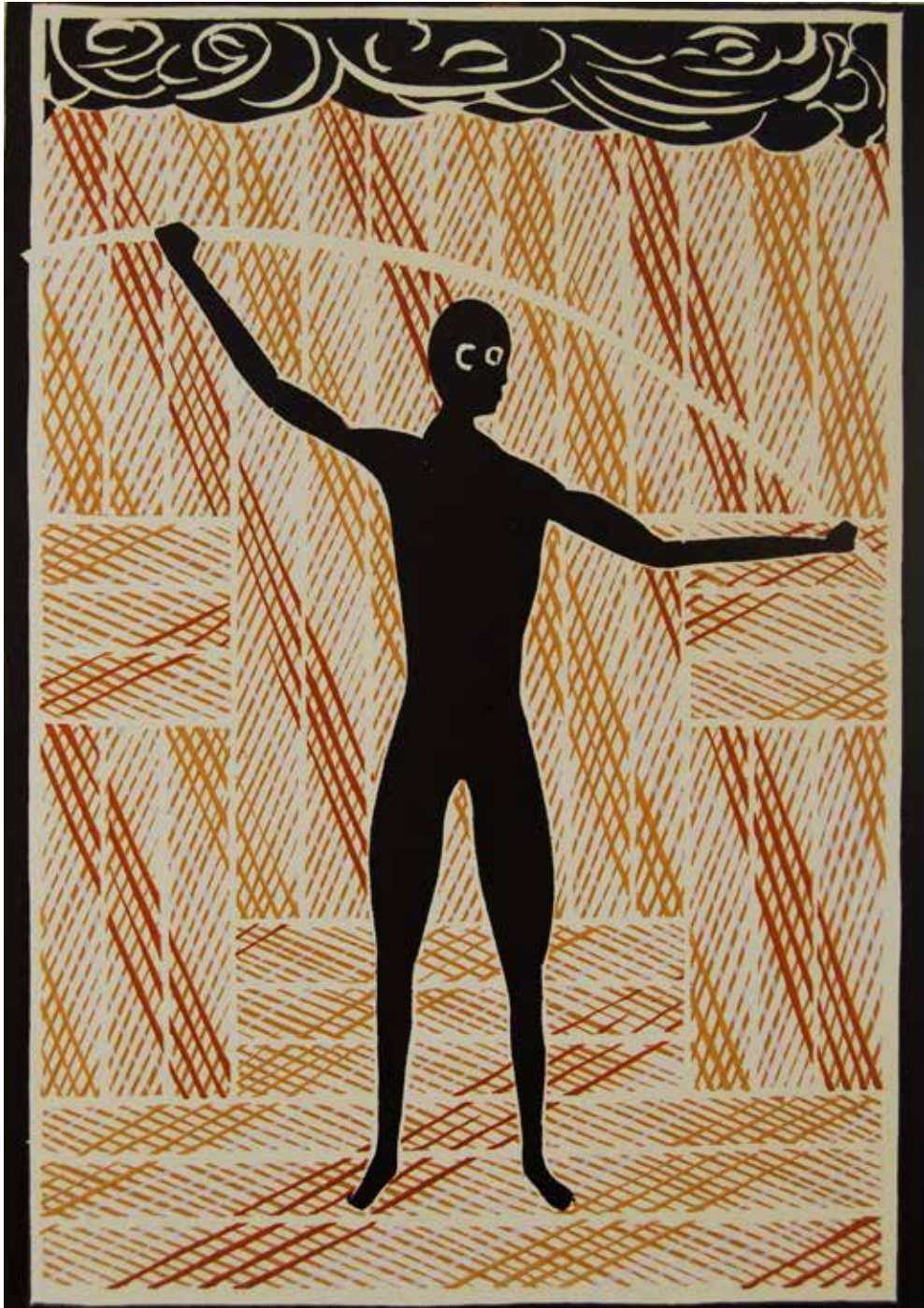
[*Gurtha*](#)

Barrupu Yunupingu (dec), Buku-Larrnggay Mulka, linocut, editioned at Yirrkala Print Space 2011, 30 x 30 cm,
PRICE (\$AUD): \$275



[Yalangbara](#)

Ruby Alderton, Buku-Larrnggay Mulka, etching, editioned at Yirrkala Print Space 2012, 20 x 25 cm,
PRICE (\$AUD): \$275



[Bolngu, \[from the Yalangbarra Suite of six etchings\]](#)

Banduk Marika, East Arnhem Land, colour reduction linocut, edited by Basil Hall Editions 2006, 28 x 21 cm,
PRICE (\$AUD): \$330



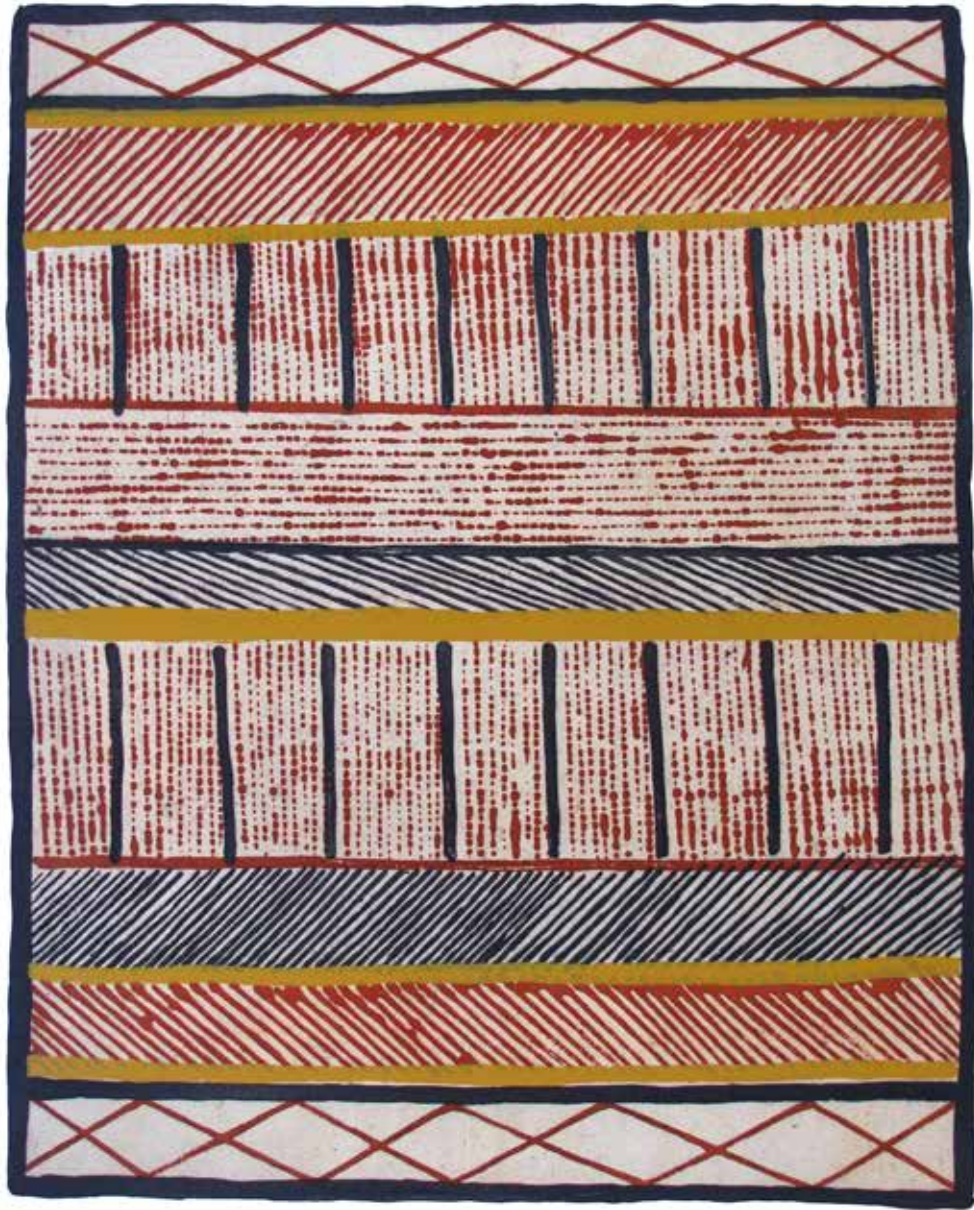
[Gapu with Mililka](#)

Ishmael Marika, Buku-Larrnggay Mulka, lithograph, editioned by Adrian Kellett 2016, 21 x 30 cm,
PRICE (\$AUD): \$215



[Narbalek](#)

Bardayal Nadjamerrek, Injalak Arts, etching, editioned by Andrew Sinclair 2009, 70 x 52 cm,
PRICE (\$AUD): \$1950



Jilamara

Pedro Woenameri, Jilamara Arts, etching, editioned by Basil Hall Editions 2016, 60 x 44 cm,
PRICE (\$AUD): \$480



[Wantaringuwi 1 - Sun](#)

Dino Wilson, Jilamara Arts, silkscreen, edited by Basil Hall Editions 2016, 40 x 50 cm,
PRICE (\$AUD): \$480



[Tunga - Jikipayinga](#)

Jean Baptiste Apuatimi (dec), Tiwi Design, etching and aquatint, editioned by Northern Editions 2012, 50 x 39 cm,
PRICE (\$AUD): \$720



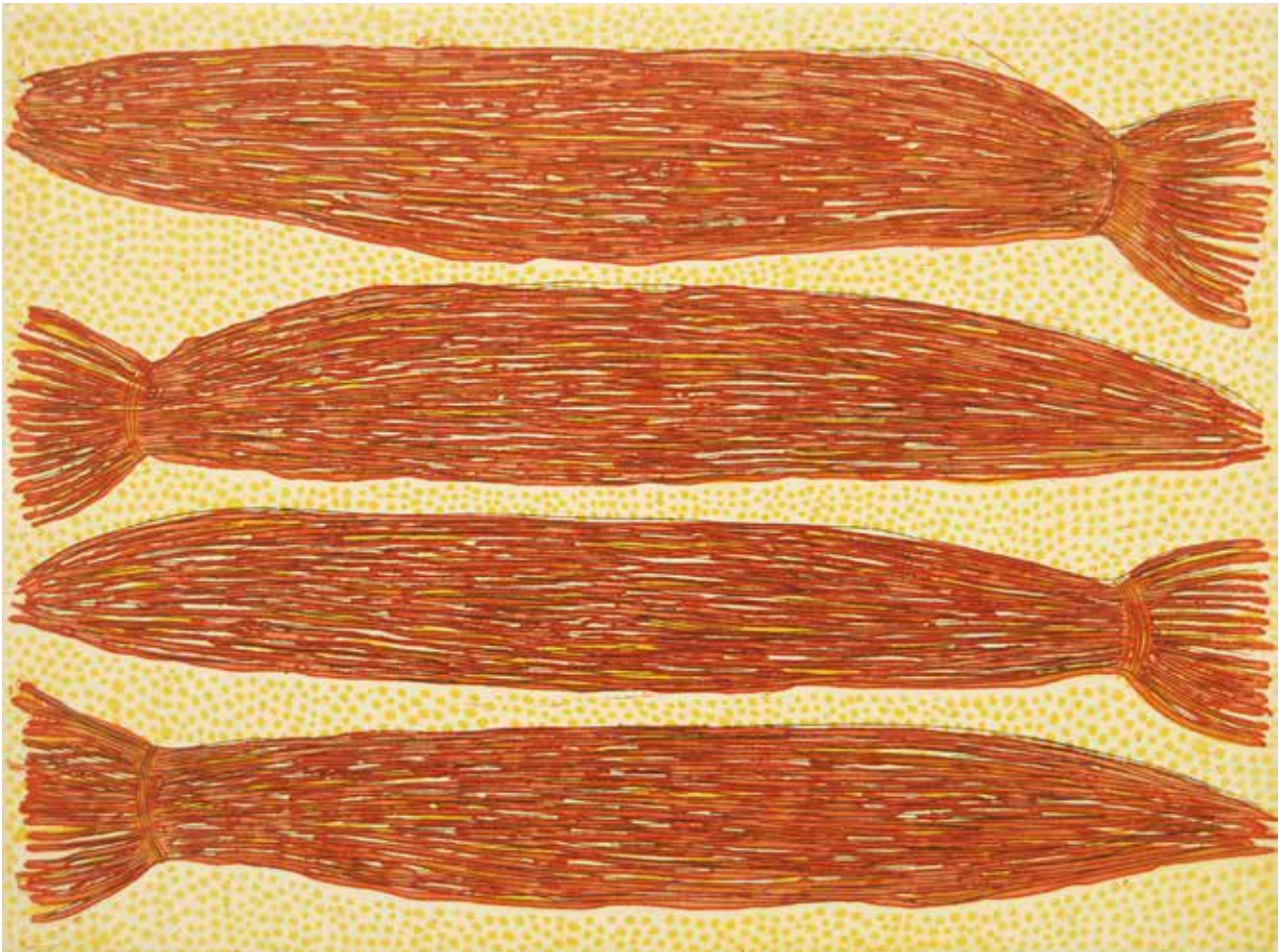
[Weaving Design](#)

Anastasia Naiya Wilson, Durrmu Arts, etching, editioned by Basil Hall Editions 2009, 37 x 64 cm,
PRICE (\$AUD): \$330



[Syaw](#)

Regina Pilawuk Wilson, Durrmu Arts, etching, editioned by Basil Hall Editions 2008, 50 x 39 cm,
PRICE (\$AUD): \$1400



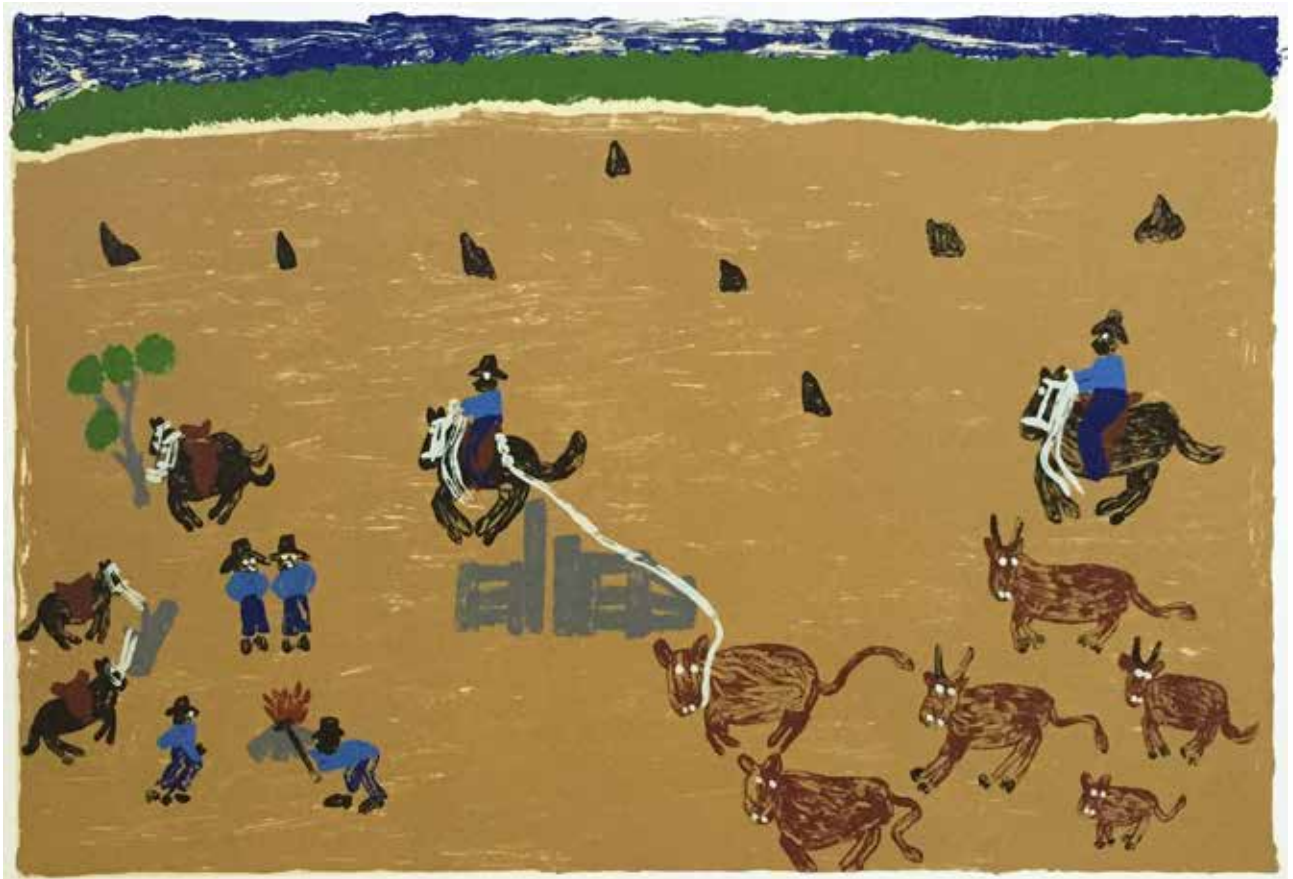
[Yerrgi - Pandanus bundles](#)

Kieren Karritpul, Merrepen Arts, etching, editioned by Basil Hall Editions 2016, 25 x 32 cm,
PRICE (\$AUD): \$400



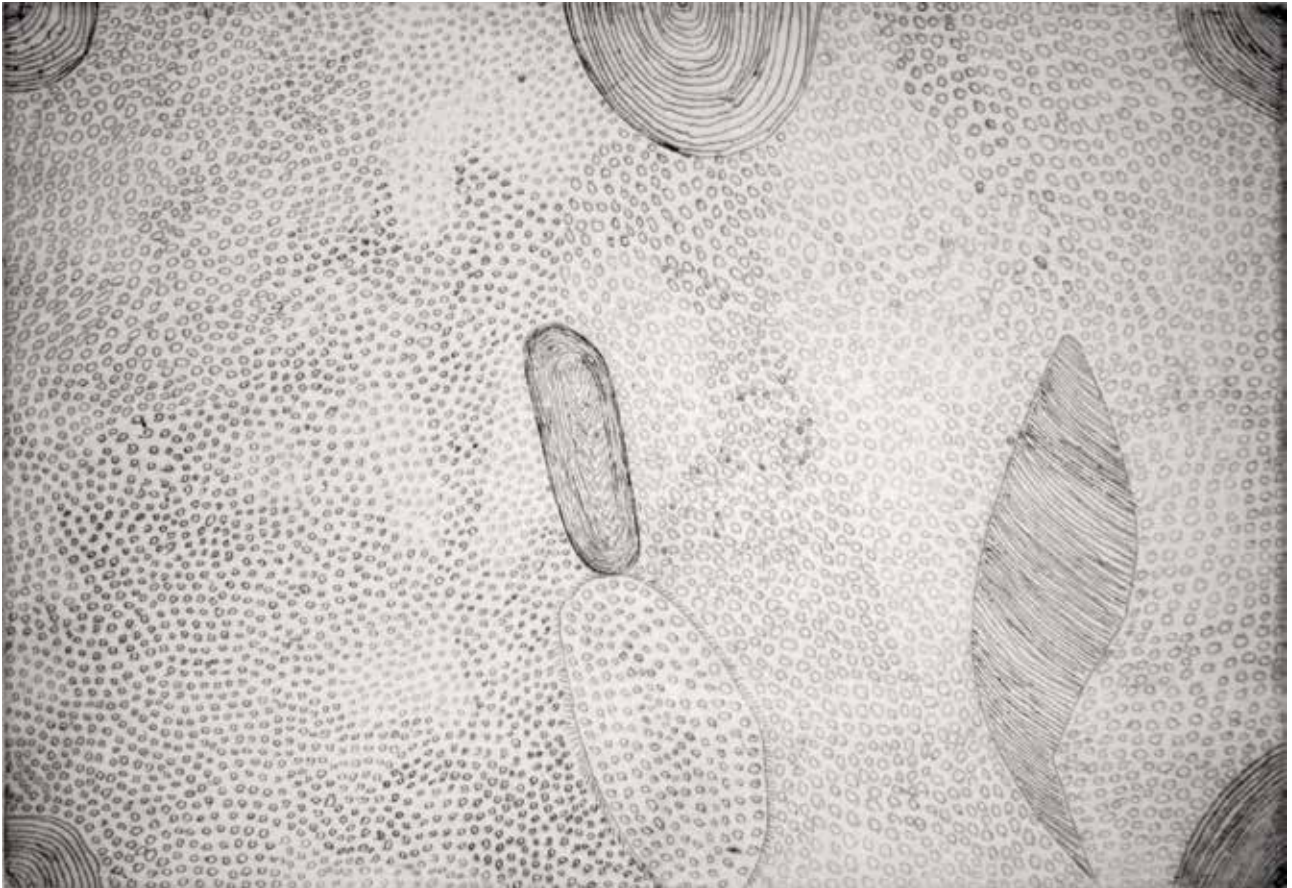
Country near Calvert Hill

Stewart Hoosan, Waralungku Arts, silk screen, edited by Basil Hall Editions 2016, 36 x 36 cm,
PRICE (\$AUD): \$330



[Branding Cattle in Open Country](#)

Nancy McDinny, Waralungku Arts, silk screen, editioned by Basil Hall Editions 2016, 36 x 53 cm,
PRICE (\$AUD): \$295



Boongga - Bush Potato

Janangaroo Butcher Cherel (dec), Mangkaja Arts, etching, edited by Australian Print Workshop 2006,
PRICE (\$AUD): \$650



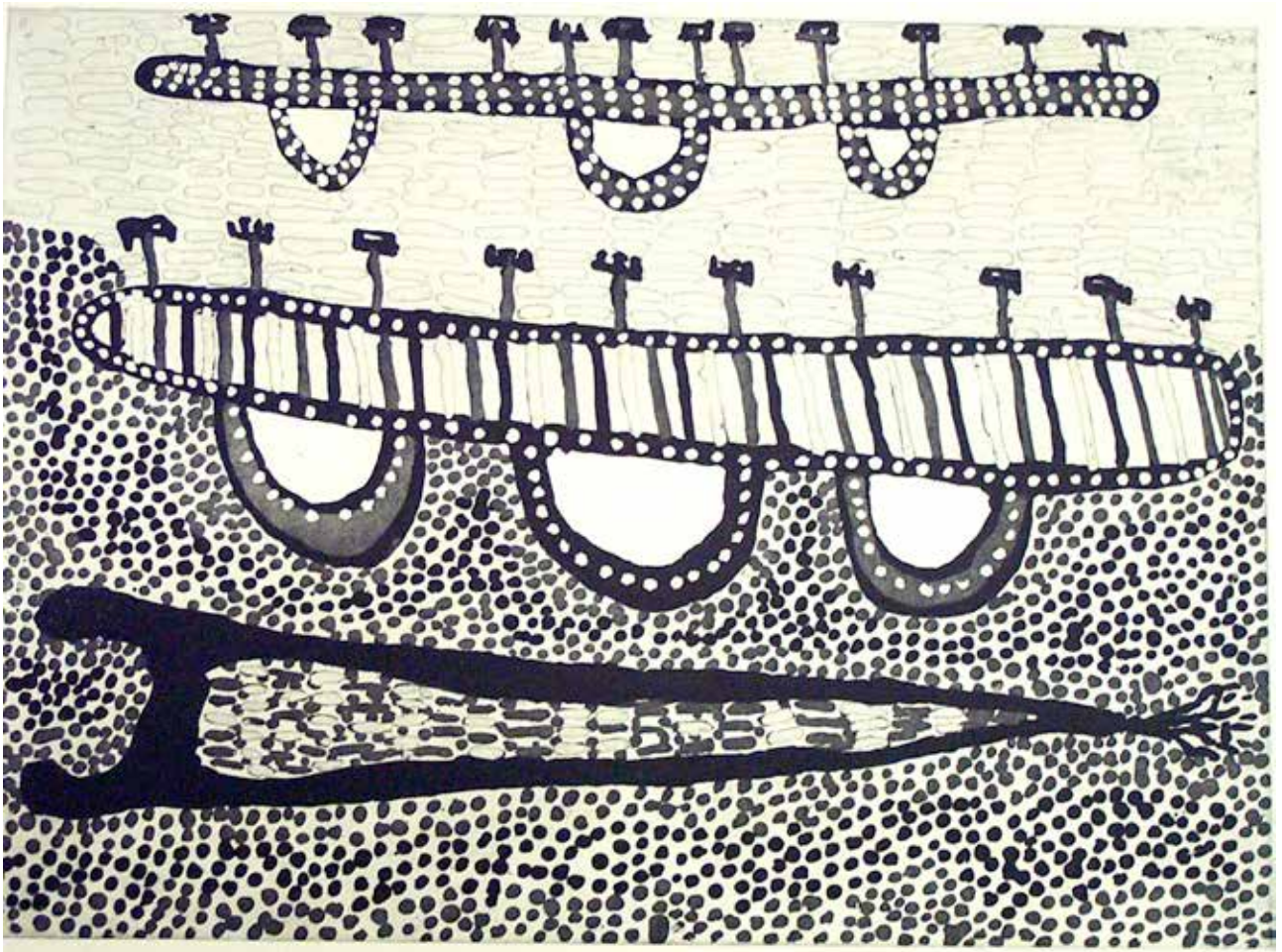
[Martuwarra](#)

Sonia Kurarra, Mangkaja Arts, etching, editioned by Basil Hall Editions 2015, 30 x 40 cm,
PRICE (\$AUD): \$550



[Pirmal](#)

Wakartu Cory Surprise (dec), Mangkaja Arts, silkscreen, editioned by Basil Hall Editions 2008, 76 x 56 cm,
PRICE (\$AUD): \$825



[*Warnda Warnda*](#)

Ngarralja Tommy May, Mangkaja Arts, etching, editioned by Australian Print Workshop 2006, 65 x 47 cm,
PRICE (\$AUD): \$495



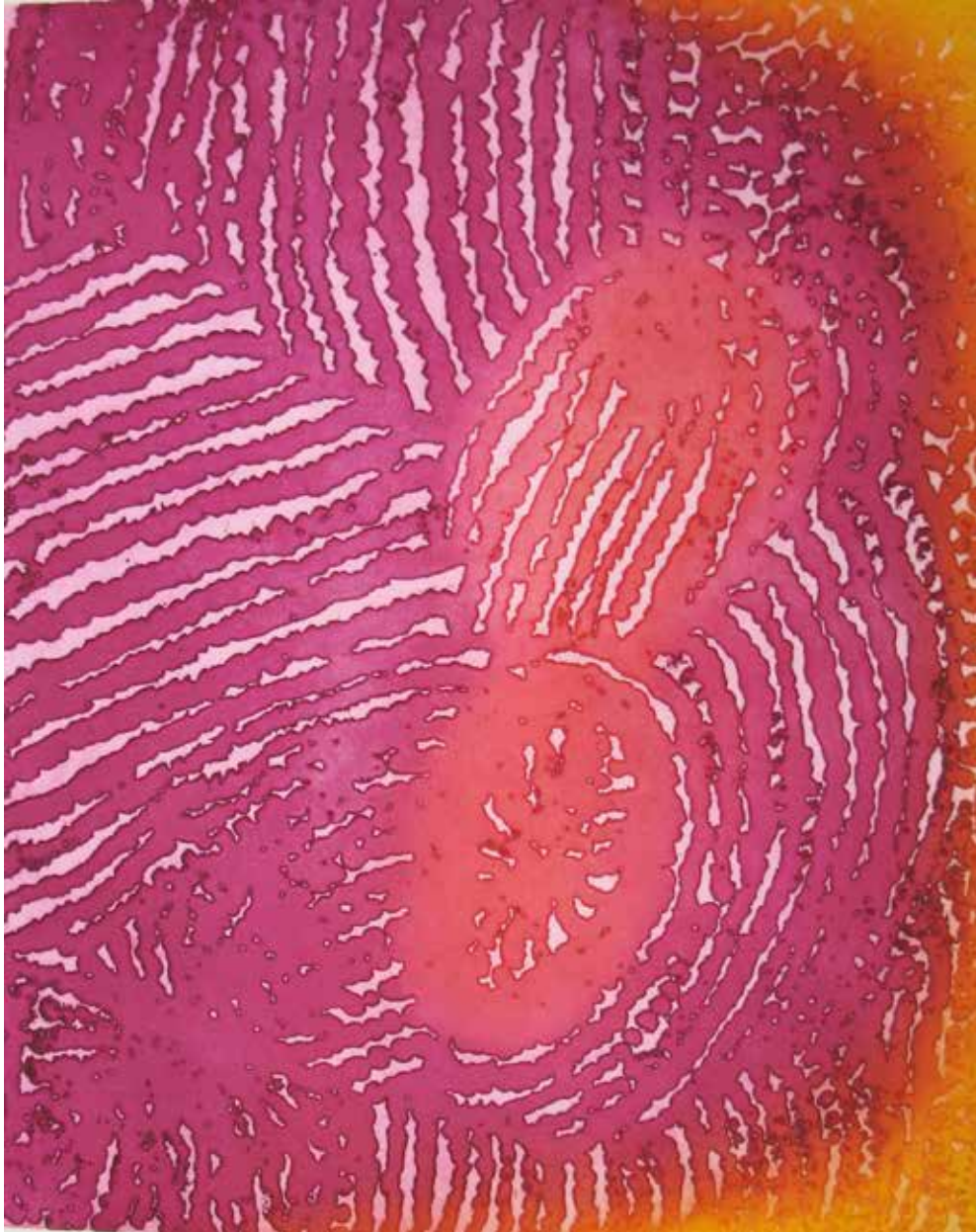
[Geminigan Country - Bull Hole](#)

Rammey Ramsey, Warmun Arts, etching, editioned by Northern Editions 2014, 50 x 49 cm,
PRICE (\$AUD): \$770



[Birnoo Country](#)

Gordon Barney (dec), Warmun Arts, etching, editioned by Basil Hall Editions 2015, 49 x 59 cm,
PRICE (\$AUD): \$485



[Parwalla](#)

Elizabeth Nyumi, Warlayirti Artists, etching, editioned by Northern Editions 2013, 50 x 40 cm,
PRICE (\$AUD): \$810



[Wangkartu](#)

Helicopter Joe Tjungurrayi, Warlayirti Artists, woodblock, editioned by Northern Editions 2013, 50 x 40 cm,
PRICE (\$AUD): \$935



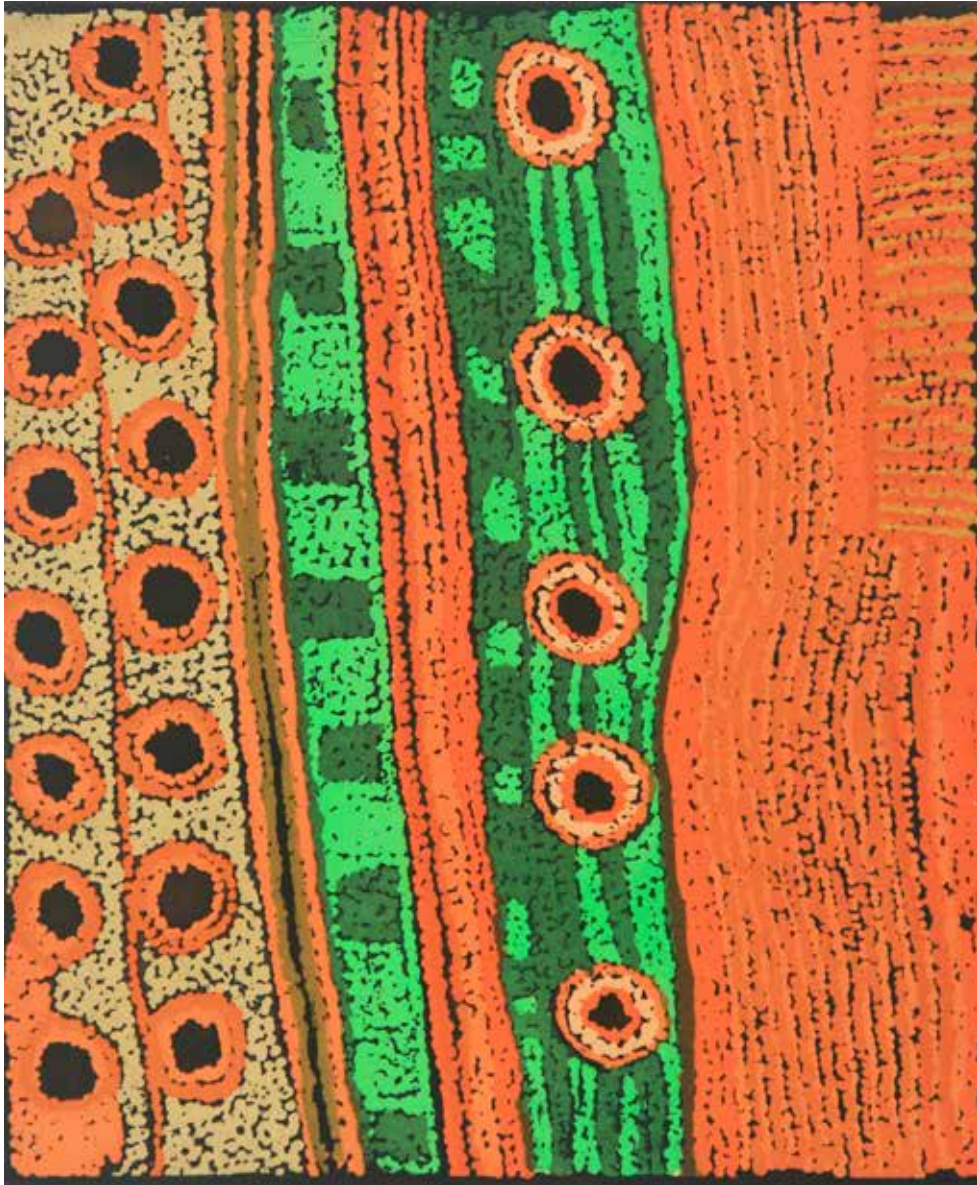
[Kinyu](#)

Eubena Nampitjin (dec), Warlayirti Artists, etching, editioned by Northern Editions 2004, 24.5 x 24.5 cm,
PRICE (\$AUD): \$880



[Salt on Mina Mina](#)

Dorothy Napangardi, Central Australia, etching, editioned by Basil Hall Editions 2008, 50 x 39 cm,
PRICE (\$AUD): \$1500



Nyumun

Marinka Baker, Central Australia, etching, editioned by Basil Hall Editions 2009, 50 x 49 cm,
PRICE (\$AUD): \$800



[Untitled PR1](#)

Nyilyari Tjapangati, Papunya Tula Artists, etching, editioned by Firebox Studio 2010, 33 x 25 cm,
PRICE (\$AUD): \$450



[Untitled PR23](#)

Warlimpirrnga Tjapaltjarri, Papunya Tula Artists, etching, editioned by Firebox Studio 2010, 33 x 25 cm,
PRICE (\$AUD): \$450



[Untitled PR26](#)

Ronnie Tjampitjimpa, Papunya Tula Artists, etching, editioned by Firebox Studio 2010, 33 x 25 cm,
PRICE (\$AUD): \$650



[Two Birds](#)

Dulcie Sharpe, Yarrenyty Arlttere Artists, etching, editioned by Madeleine Goodwolf 2016, 30 x 30 cm,
PRICE (\$AUD): \$485

***Shining Light*: prints by leading contemporary indigenous artists from the Nomad Art Collection**

CURATOR STATEMENT:

Printmaking has been the ignition for many leading Indigenous artists who headline contemporary biennales and win major art awards. Works by these artists have energised the contemporary art scene with powerful creations that roar with deep culture and gift us an experience of country. In light of recent grand scale installations and immersive media works grabbing attention in the big exhibitions and events, I want to draw attention to the intimacy of prints on paper.

When Nomad Art invited me to curate an exhibition from their collection, I wanted to shine a light on the hero artists whose prints on paper are accessible in their inventory. The title *Shining Light* refers to both the process of illuminating key works in the shadows of an archive and to the power of these artists as 'shining lights' or master spirits of the art world.

One of the things I loved about working with Nomad Art in Darwin from 2009 to 2013 was how the intimate space in Parap held an encyclopaedia of art from all over Australia. Hundreds of great artworks were tucked away in cabinets of wonder, where the labels on the plan drawers were an invitation to travel through the regions. Going through the drawers provided easy access to the shifting aesthetics across complex country and culture, where viewing prints presented a journey through Arnhem Land, over the Kimberley and tracking down to central desert. The bringing together of so many prints from art centres and artists by region ingrained in me the connection between art and place.

Being able to hold a work on paper in my (cotton-gloved) hands gave an immediacy to the artist and technique. There is a close encounter with small scale works and fine mark making, where looking at the detail draws the viewer into a condensed world. All the prints selected for *Shining Light* are especially accessible. They are collaborative in nature, created in a workshop where typically artists work side by side and in dialogue with the professional printmaker to develop the image through technique and explored mediums. The process of print requires envisioning the result as something different to the work at hand as the etching plate will be printed in reverse, the lino carved line will be negative space and screenprints are made up of separate layers for each colour.

In selecting works for *Shining Light* I considered how the artist adapted their usual practice into print so that my selection is also a reflection on process. The phenomenal *Yolngu* artist Nyapanyapa Yunupingu worked in prints before beginning to paint. Her screenprints from 1998 use vibrant colour to dazzling effect. Now known for her dense mark-making in ochre on monumental barks and installations using new media technologies, she is a dynamic and innovative leading contemporary artist. I was completely in awe when I walked through her forest of *larrakitj* installation *Bathala* for the 2016 *Biennale of Sydney* at the Art Gallery of NSW. Intricate frenetic designs made the hefty hollow logs shimmer while light and shadow played, which transformed the gallery into an otherworldly space of spirit and power. I recall the first time Nomad Art exhibited Nyapanyapa Yunupingu's barks, carvings and prints in 2008 and I was mesmerised.

The Nomad Art Collection holds many prints by the artist across a range of techniques spanning over two decades. From her prolific output I was most drawn to a small delicate lino print (*Pink Lines*). The deft slashes carved into this linocut are the same hand gestures as her signature lines rendered in ochre, the point of the carving chisel makes the same sharp ends as the *marwat* fine hair-brush. This concise little work encapsulates the same energy that mesmerises in the big scale.

Nomad Art has now transported their universe of prints to their own homelands of Victoria, to an even more compact little gallery space in the town of Euroa. We planned to present this survey exhibition in Melbourne to introduce the gamut of prints available. I wanted to bring to light the treasures sequestered in their inventory, prints that I have coveted because they are intimate pieces of my hero artists. Artists that are innovators and leaders in contemporary art, their power condensed onto holdable pieces of paper.

Especially in this time of having to stay at home, the small scale and compact materiality of prints seem all the more relevant when you can't get to the big galleries. Viewing the online exhibition through a screen will not do justice to the tactility and pigments of print on paper, but the power of a favourite artist resonates to make an intimate connection that can be held.

Talitha Kennedy, curator and artist

Talitha Kennedy is an artist, curator and professional in the visual art sector. She has exhibited black leather sculptures, installations and ink drawings in public galleries, artist-run-spaces and commercial galleries across Australia including solo exhibitions in Darwin, Melbourne, Sydney and Townsville.

Most recently Gallery Manager with Vivien Anderson Gallery, Melbourne; Collection Manager for the Laverty Collection, Sydney 2014 - 2018; and Assistant Manager at Nomad Art Gallery, Darwin 2009 - 2013.

