

Anabran

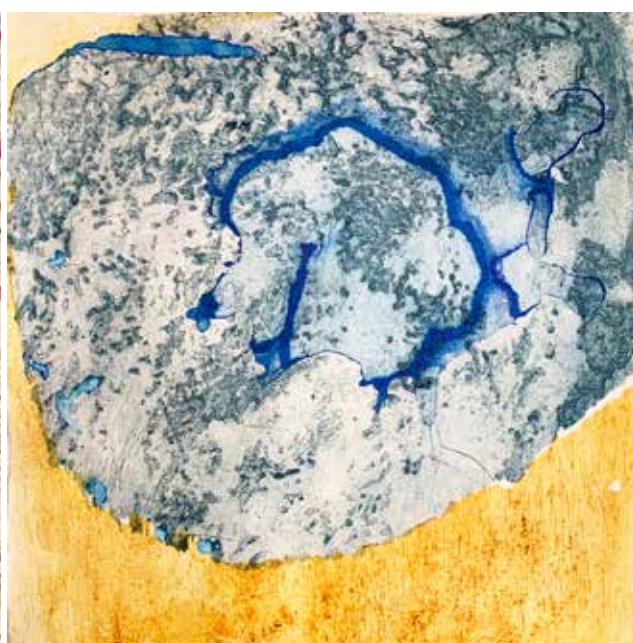
Catalogue of works

Gus Leunig, pages 2 - 9

Angus Cameron, pages 10 - 22



High in the sky by Gus Leunig



Becoming the Lake X (detail) by Angus Cameron

Anabran is a joint exhibition of paintings and prints examining the artists shared environment along the creek and river systems of the Strathbogie Ranges and beyond.

Anabran refers to the way in which the artists explore elements and pathways of their subject matter but continually return to the essence of the natural environment as a key reference.

1 Kibble Lane, Avenel, Victoria, 3664
nomad@nomadart.com.au
www.nomadart.com.au
0415 912 115



We acknowledge that we are on the traditional lands of the Taungurung people and pay our respects to their Elders past and present.





Gus Leunig, Runaways, acrylic on canvas, 64 x 64 cm, framed \$3600



Gus Leunig, Down in the Park, acrylic on canvas, 65 x 65 cm, framed \$3600



Gus Leunig, Close to Home, acrylic on canvas, 75 x 75 cm, framed \$4200



Gus Leunig, Flight Path, acrylic on canvas, 75 x 75 cm, framed \$4200





Gus Leunig, Blue Wing, acrylic on canvas, 54 x 54 cm, framed \$2800



Gus Leunig, Walk the Path, acrylic on canvas, 54 x 64 cm, framed \$3600



Angus Cameron, *Becoming the Lake X*, collagraph, 72 x 52 cm, unframed \$1350



Angus Cameron, *Becoming the Lake XI*, collagraph, 80 x 40 cm, unframed \$1350



Angus Cameron, *Becoming the Lake I*, collagraph, 80 x 40 cm, unframed, \$1250



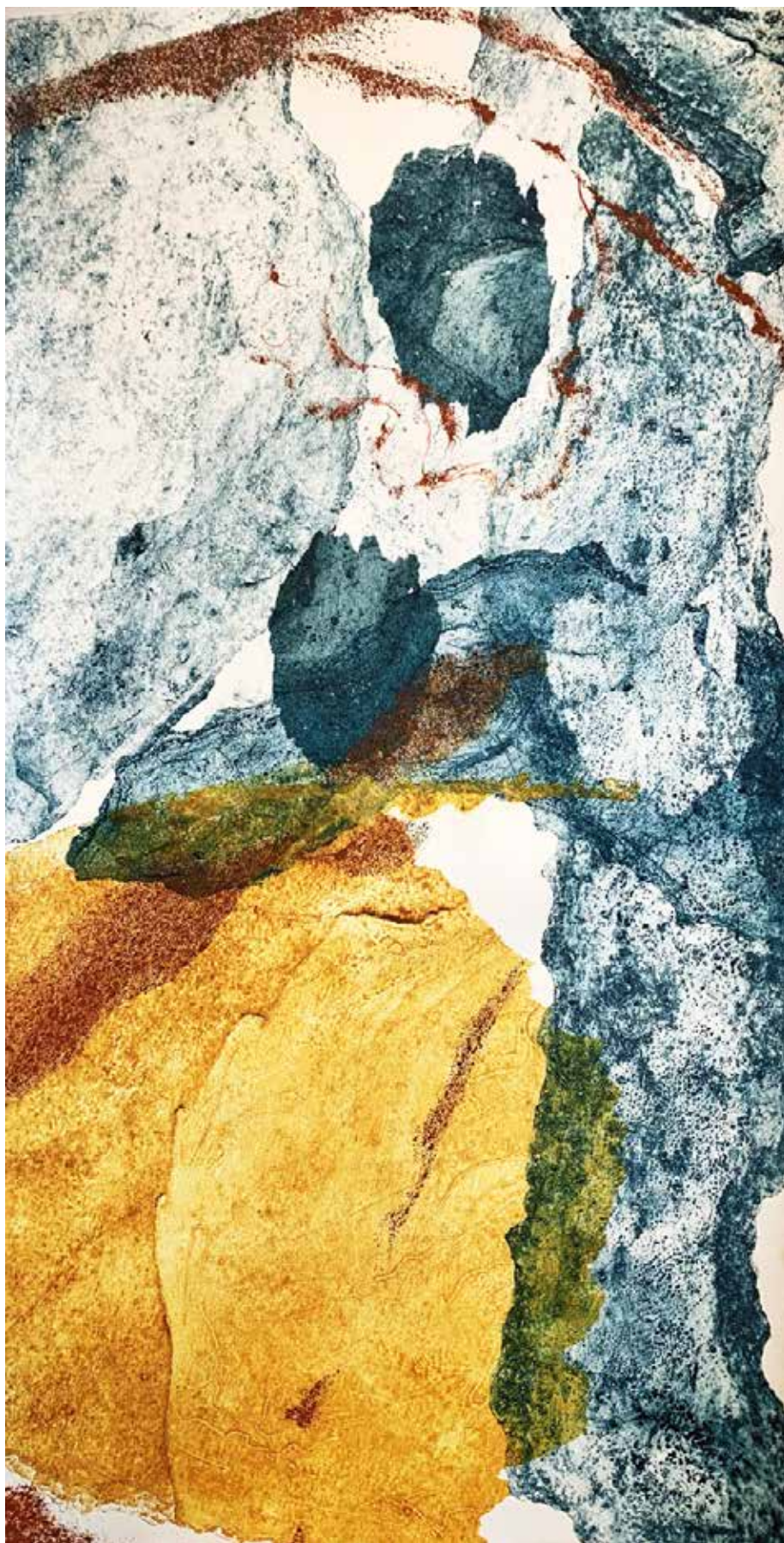
Angus Cameron, *Becoming the Lake II*, collagraph, 80 x 40 cm, unframed, \$1250



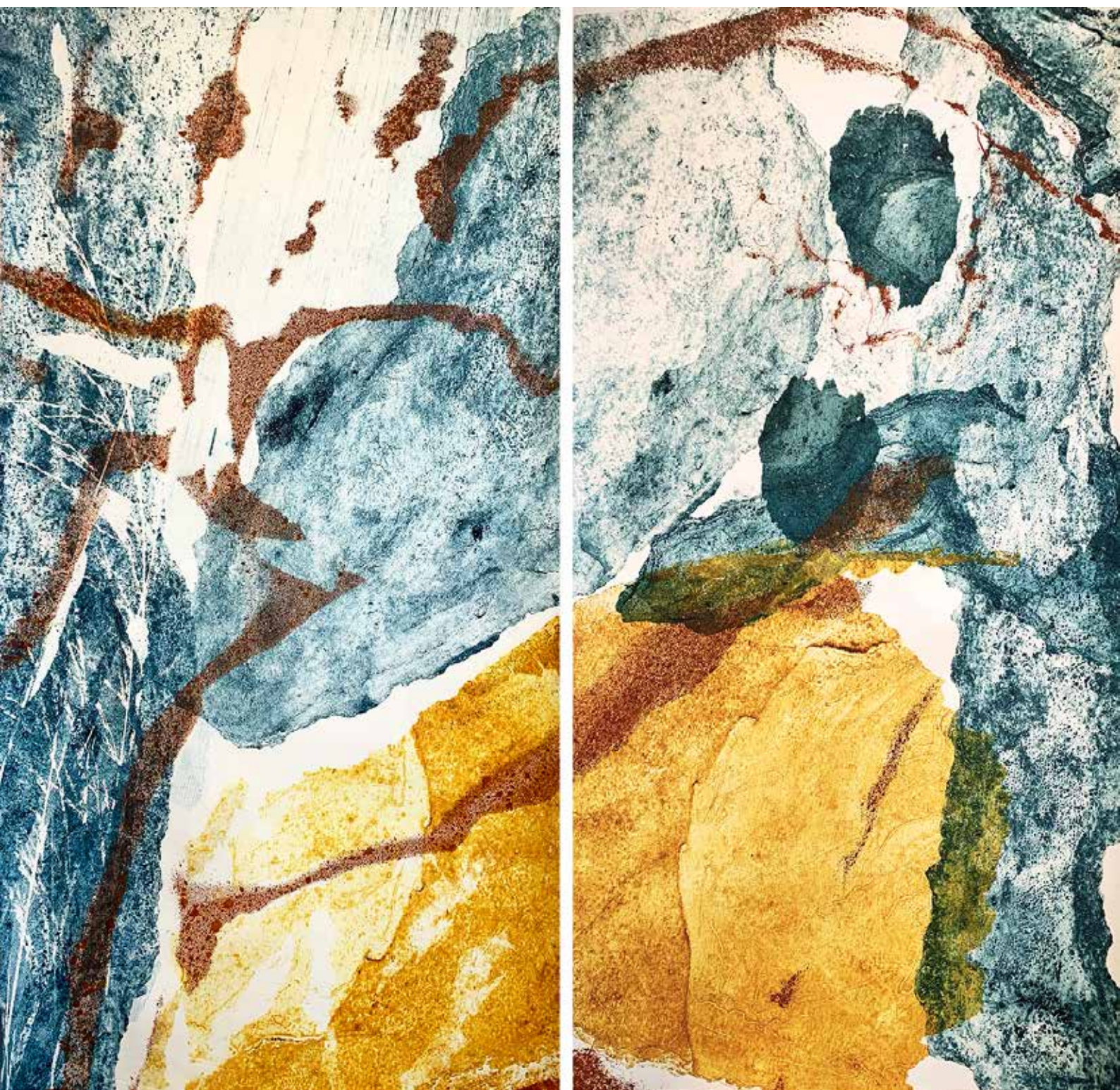
Angus Cameron, *Becoming the Lake I & II*, collagraph, 80 x 80 cm, unframed \$2200



Angus Cameron, *Becoming the Lake III*, collagraph, 80 x 40 cm, unframed, \$1250



Angus Cameron, *Becoming the Lake IV*, collagraph, 80 x 40 cm, unframed, \$1250

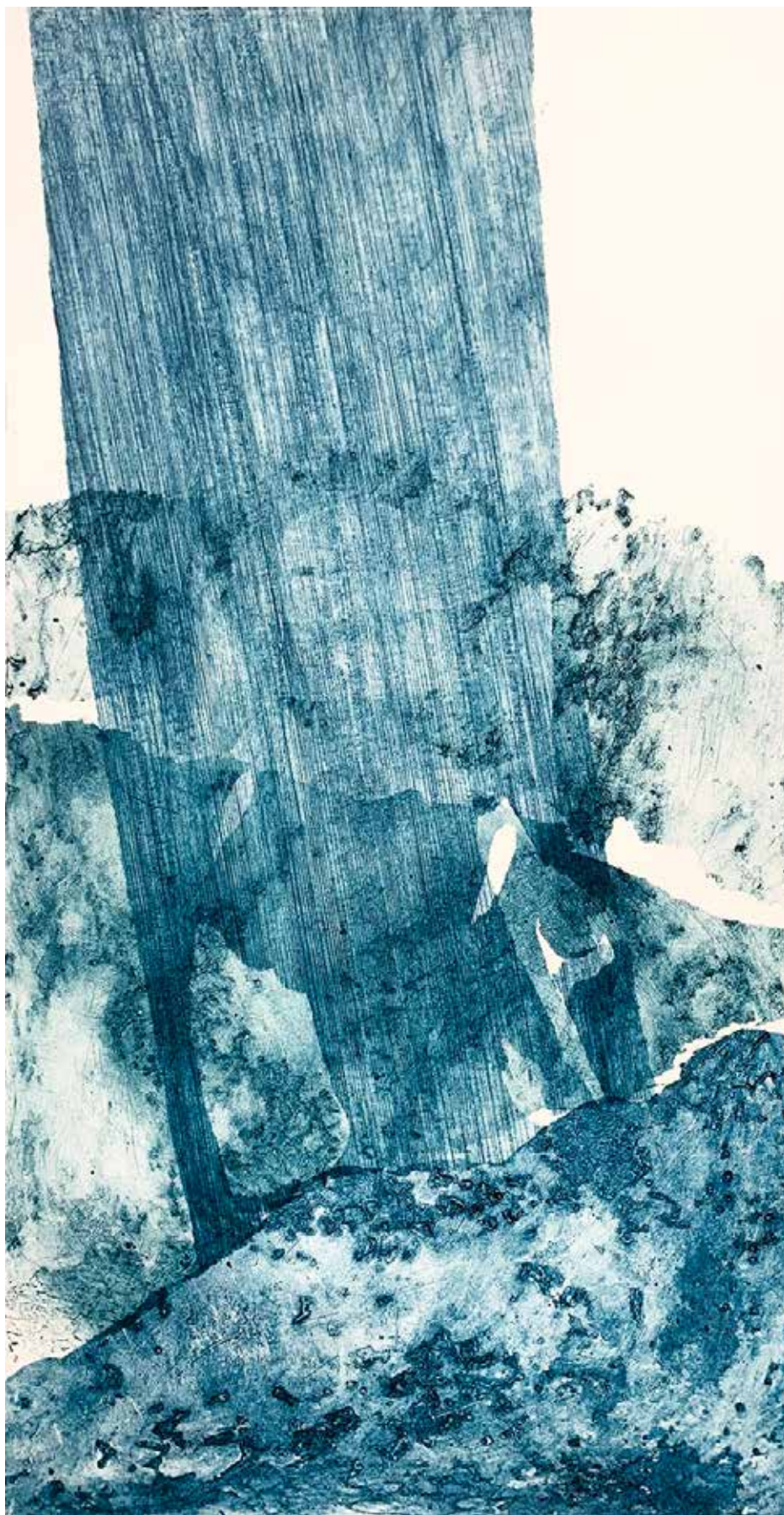


Angus Cameron, *Becoming the Lake III & IV*, collagraph, 80 x 80 cm, unframed, \$2200 17





Angus Cameron, *Becoming the Lake VI*, collagraph, 80 x 40 cm, unframed, \$1250



Angus Cameron, *Becoming the Lake VII*, collagraph, 80 x 40 cm, unframed, \$1250





Angus Cameron, *Becoming the Lake IX*, collagraph, 80 x 40 cm, unframed, \$1250

Gus Leunig

Gus Leunig's colourful and poetic paintings encapsulate his love of the natural environment in the countryside where he lives in northeast Victoria.

Leunig's imagery is created through a mixture of observation and imaginative expression. His art features quirky figures which inhabit a complex and whimsical world. The elements in his work are drawn together through a tight compositional framework while creating playful pathways with unexpected encounters.

Leunig's art career began in 2009 with a sell-out show at Art Sydney, followed by a succession of solo exhibitions at Libby Edward's gallery in Melbourne. He currently exhibits with Van Rensburg Galleries in Hong Kong and New York and Salt Contemporary Art Gallery in Queenscliff.

The artist's work has been purchased for both private collections and public foundations such as The Epworth Hospital Foundation. His art has featured in television dramas on the ABC and Channel 10 in Australia.

Gus Leunig lives in and works in Avenel, Victoria.

Angus Cameron

Based in Avenel in northeast Victoria, Angus Cameron makes prints and impressions on paper that reflect the environment where he lives. His works embody aesthetics found in nature, echoing forms and patterns that make up the micro and macro world of plants and place. The work sits in a space between abstraction and representation. It is a filtered gaze reflecting the patterns and shapes of the land and the life it supports.

Angus resided in Darwin from 1997 to 2019 and has extensive experience in art education, project management, curating and arts industry development. In 2005 Angus established Nomad Art Productions in partnership with his wife Rose. Nomad Art is well known for facilitating unique projects that foster cross-cultural collaborations with artists nationally. These curated exhibitions promote collaboration, reconciliation and understanding and with an educational focus.

Angus relocated to Victoria in 2019 and established a print making studio at his home in Avenel, allowing him to focus once again on his own artwork.

1 Kibble Lane, Avenel, Victoria, 3664
nomad@nomadart.com.au
www.nomadart.com.au
0415 912 115, or 0428 308 793

