



Nomad Art presents *Watermarks*

October 7 – October 29

ARTBOX - Jubilee Park, Avenel

This exhibition from the Nomad Art Collections in Avenel looks at the diverse ways artists explore the notion of water. The works range from depictions of the sea, living water in the desert, ceremonial associations and environmental perspectives.

Watermarks includes a selection of screenprints, etchings and linocuts by the following artists:

Candy Nakamarra – Central Australia
Helicopter Joe Tjungurrayi – Great Sandy Desert
Bawaka Yunupingu – East Arnhem Land
Laurie Nona – Far North Queensland
Ezarahia Kelly – West Arnhem Land
John Wolseley – Victoria
Winsome Jobling – Northern Territory

Opening Saturday October 7th, 10.30 am – 1 pm

The *Watermarks* exhibition can be viewed through the glass windows at any time, and will be open during the following times:

- Saturday October 7, 10.30am - 1pm
- Sunday 8 October (Avenel Market), 9am - 1pm
- October 14 & 15, 10am – 1pm
- October 21 & 22, 10am – 1pm

Other times by appointment

More information – gallery@nomadart.com.au, 0415 912 115



Kalipinypa, screenprint by Candy Nakamarra, Central Australia, 60 x 42 cm
\$420 unframed

The print depicts designs associated with *Kapi Tjukurrpa* (Water Dreaming) at *Kalipinypa* near the Gibson Desert in remote Western Australia.

The *Tjukurrpa* tells of an important rain making ceremony to invoke the elements. It is a powerful storm bringing on the lightning, thunderclouds and rain sending its deluge to rejuvenate the earth, filling rock holes, clay pans and creeks. It has the power to create new life and growth upon the land. The different elements of the image represent *puuli* (hills), *tali* (sandhills) and *kapi* (water). The arrow shapes represent the footprints of the white heron that frequents the site.

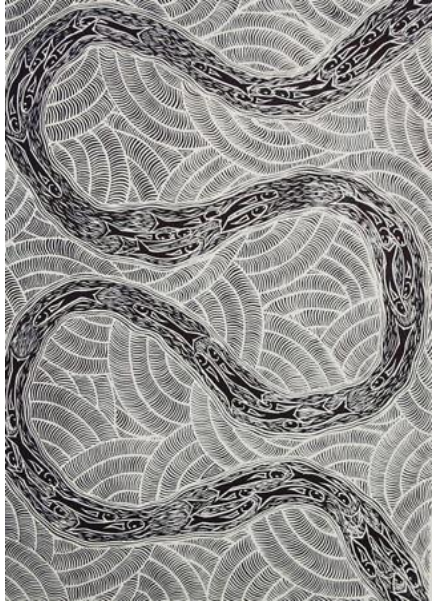
© Papunya Tjupi Arts



Kurrulyar, screenprint, Helicopter Joe Tjungurrayi, Great Sandy Desert, 64 x 49 cm
\$935 unframed

This screenprint depicts a *tjurnnu*, (soak water), located on Helicopter's traditional country. This *tjurnnu* is known as *Karrulyar* and is located far to the south of Balgo in the Great Sandy Desert.

Karrulyar features in the centre of the print, and it is a place that provides dependable water only in the winter months. The country around *Karrulyar* is mainly flat open. Surrounding *Karrulyar*, and dominating the landscape of the area, are *tali* (sand dunes). The dot work between the *tali* depicts *kamitji* (bush tomato) which is commonly found here.



Mullet, screenprint by Bawaka Yunupingu, East Arnhem Land, 49 x 38 cm
\$475 unframed

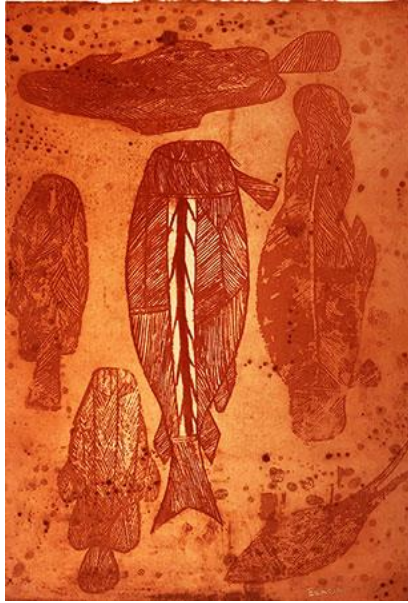
'This story is about the fish travelling from one place to another. They use the current of the ocean to travel to different places.' Bawaka Yunupingu



Karramarr – Trevally, linocut by Laurie Nona, Far North Queensland, 82 x 60 cm
\$660 unframed

'My print *Karramarr – Trevally* is based on the *ubarr* (wongai fruits) in the ripening season. Around this time, we experience lots of rain known to us as *peithuithai-arr* meaning the rain that washes the dead blossom of the *wongai* tree to the ground - at the same time triggering the fruits to ripen.

At this time our waters are rich and full of bait fish. Families who know this season go out fishing for *Karramarr*. My print depicts my memory of trevally attacking bait fish whilst the rain and sea water are meeting at high tide. The mask represents fish and Islanders feeding alike.' Laurie Nona



Djen - Fish, etching by Ezariah Kelly, West Arnhem Land, 57 x 38 cm
\$550 - unframed

Ezariah has depicted various *djen* (edible fish), found in the billabongs, watercourses and wetlands that occur throughout Western Arnhem Land. The three fish on the left side without heads are considered 'cooked' fish as they have been baked on a campfire wrapped in paperbark and are ready to eat.

These *djen* are represented in the x-ray style, with internal organs showing, synonymous with Western Arnhem Land rock art.

© Injalak Arts



Australasian Grebes on the Witjibar River with lacustrine insects, etching and watercolour by John Wolseley, 58 x 45 cm
\$2,600 unframed

The etching shows an *Australasian Grebe* with insect and plant life on the Witjibar River in the Victorian Wimmera. In this work the artist is exploring the systems which connect trees and plants, and the rich aquatic life of rivers, creeks and billabongs.

Witjibar, means basket grass river in the Aboriginal Djadjawurrung and Jardwadjali languages. John Wolseley



Groundwater, drypoint on handmade watermarked, pigmented, cotton rag paper with painted pulp inclusions by Winsome Jobling, Darwin, 42 x 60 cm
\$650 unframed

Groundwater is water that collects or flows beneath the soil surface, filling the porous spaces under the ground.

Jobling's rich organic imagery portrays the nature of landscapes that have been disembowelled by human activity, such as hydraulic fracturing (fracking), leaving scars and potential contamination with long-term consequences. *Groundwater* is part of a series of works in which Jobling reflects on the exploitation of Earth and questions the imbalance between humankind and the natural world.

The works consist of handmade paper made from plant materials with earth pigments.